

## **RECOMMENDATION**

In accordance with the background information and findings enumerated in this report, including the support documentation contained in the attached appendices, the Lexington-Fayette Urban County Government Board of Architectural Review recommends that the proposed local historic district, with the defined boundaries requested by the Pensacola Park Neighborhood Association and as initiated by the Urban County Planning Commission, be approved as submitted and forwarded with a recommendation of approval in its entirety to the Urban County Planning Commission for public hearing, discussion and action.

\*\*\*This page intentionally left blank\*\*\*

# APPENDICES

\*\*\*This Page intentionally left blank\*\*



# APPENDIX A

\*\*\*This Page intentionally left blank\*\*\*

## ADDITIONAL NEIGHBORHOOD IMAGES



Streetscape of south side of Suburban Court  
looking west



Streetscape of north side of Suburban Court  
looking east



Streetscape of north side of Suburban Court  
looking west



174 Suburban Court



155 Suburban Court



Streetscape of south side Suburban Court  
looking west



ADDITIONAL NEIGHBORHOOD IMAGES



133 Rosemont Garden



180 Rosemont Garden



128 Rosemont Garden



Streetscape south side of Rosemont Garden  
looking west



169 Rosemont Garden



168 Rosemont Garden



ADDITIONAL NEIGHBORHOOD IMAGES



101 Penmoken Park



123 Penmoken Park



127 Penmoken Park



135 Penmoken Park



Streetscape of south side of Penmoken Park  
looking east



Streetscape of south side of Penmoken Park  
looking west



## ADDITIONAL NEIGHBORHOOD IMAGES



1865 and 1863 Nicholasville Road



Nicholasville Road streetscape between  
Rosemont Garden and Penmoken Park



1739 and 1737 Nicholasville Road



1801 Nicholasville Road



1905 Nicholasville Road



1827 and 1823 Nicholasville Road



ADDITIONAL NEIGHBORHOOD IMAGES



102 Wabash Drive



106 Wabash Drive



113 Wabash Drive



129 Wabash Drive



Streetscape south side of Wabash Drive looking west



145 Wabash Drive



## ADDITIONAL NEIGHBORHOOD IMAGES



114 Lackawanna Road



108 Lackawanna Road



Streetscape north side of Lackawanna Road  
looking north



122 Lackawanna Road



Streetscape south side of Lackawanna Road  
looking west



Streetscape south side of Lackawanna Road  
looking east



ADDITIONAL NEIGHBORHOOD IMAGES



1855 Norfolk Drive



1859 Norfolk Drive



Streetscape of Pensacola Drive looking north



1855 and 1853 Pensacola Drive



Streetscape of Pensacola Drive looking north



ADDITIONAL NEIGHBORHOOD IMAGES



144 Goodrich Avenue



Streetscape north side of Goodrich Avenue  
looking east



122 and 124 Goodrich Avenue



138 Goodrich Avenue



131 Goodrich Avenue



125 Goodrich Avenue

# APPENDIX B

\*\*\*This page left intentionally blank\*\*\*

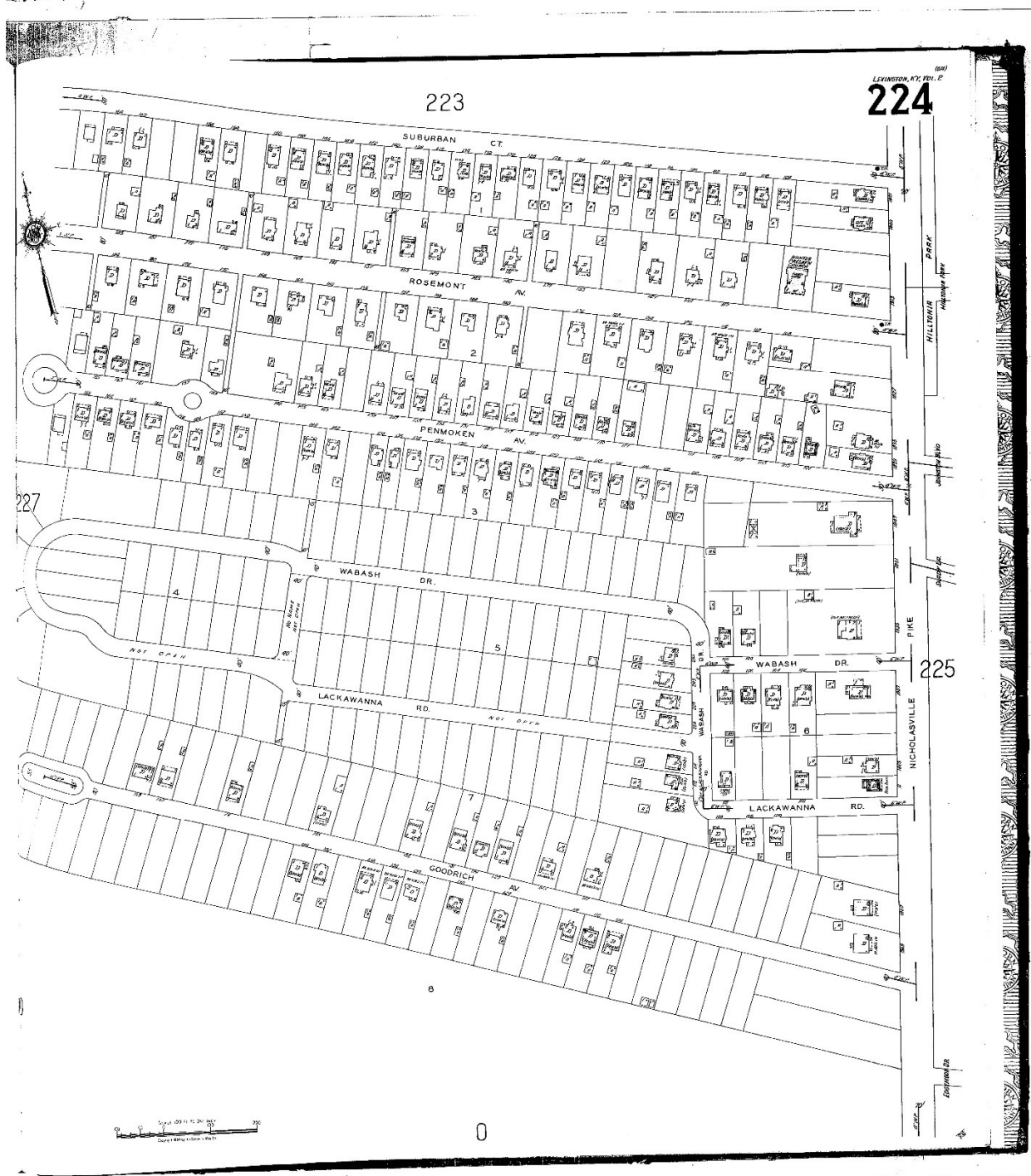
223



Sanborn Insurance Map

Lexington, Kentucky

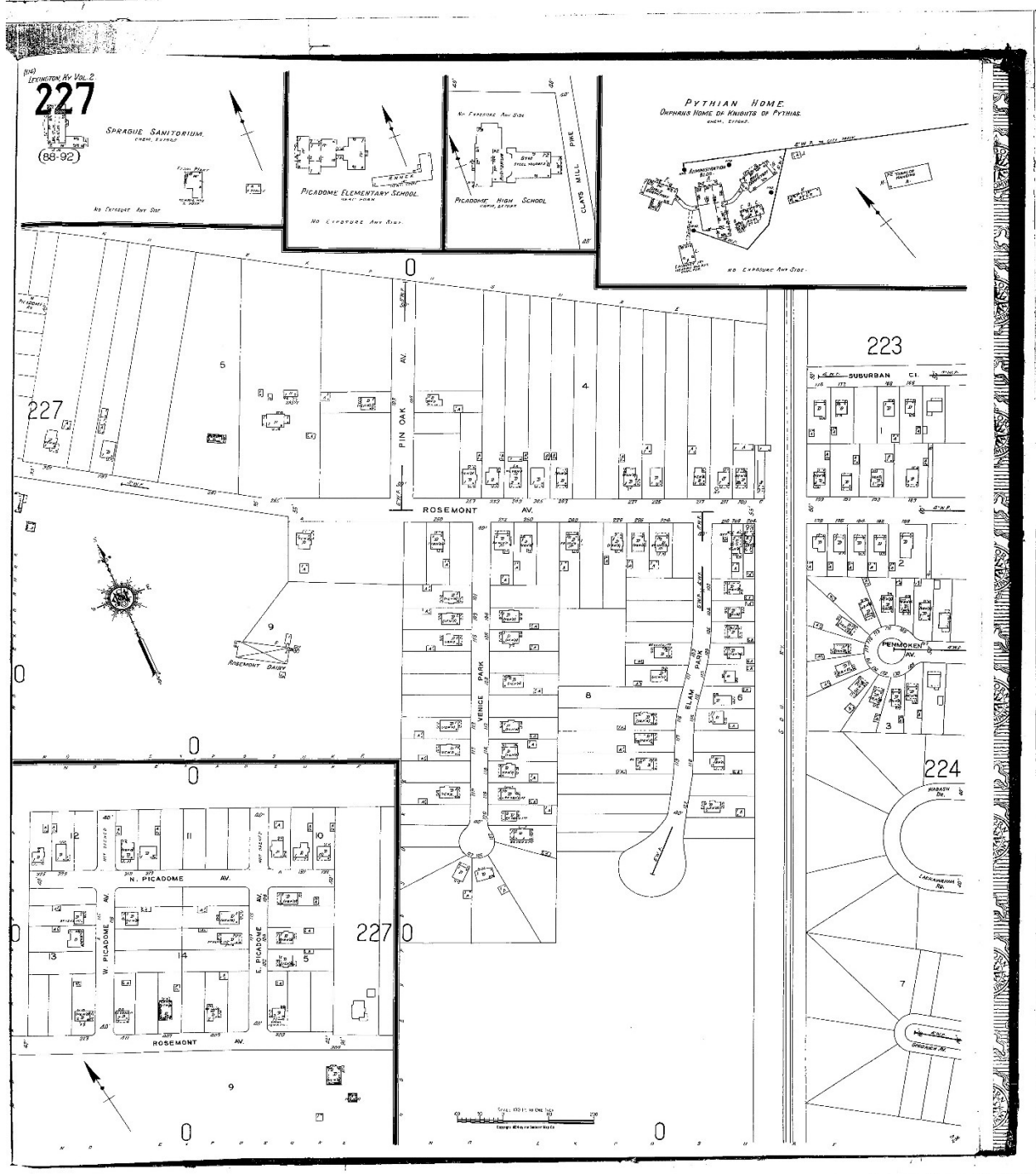
1934



Sanborn Insurance Map

Lexington, Kentucky

1934



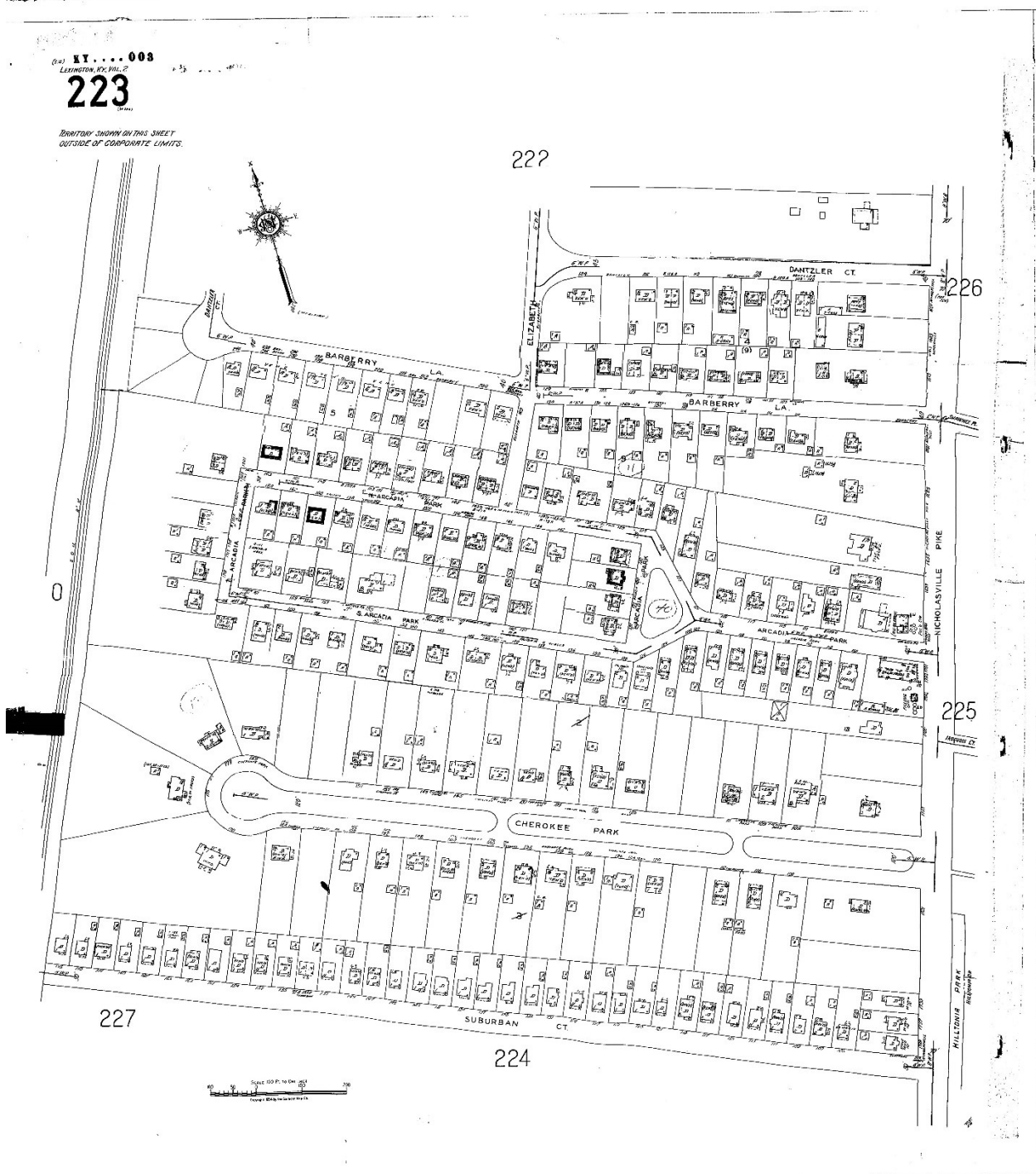
Sanborn Insurance Map

Lexington, Kentucky

1934

\*\*\*This page intentionally left blank\*\*\*



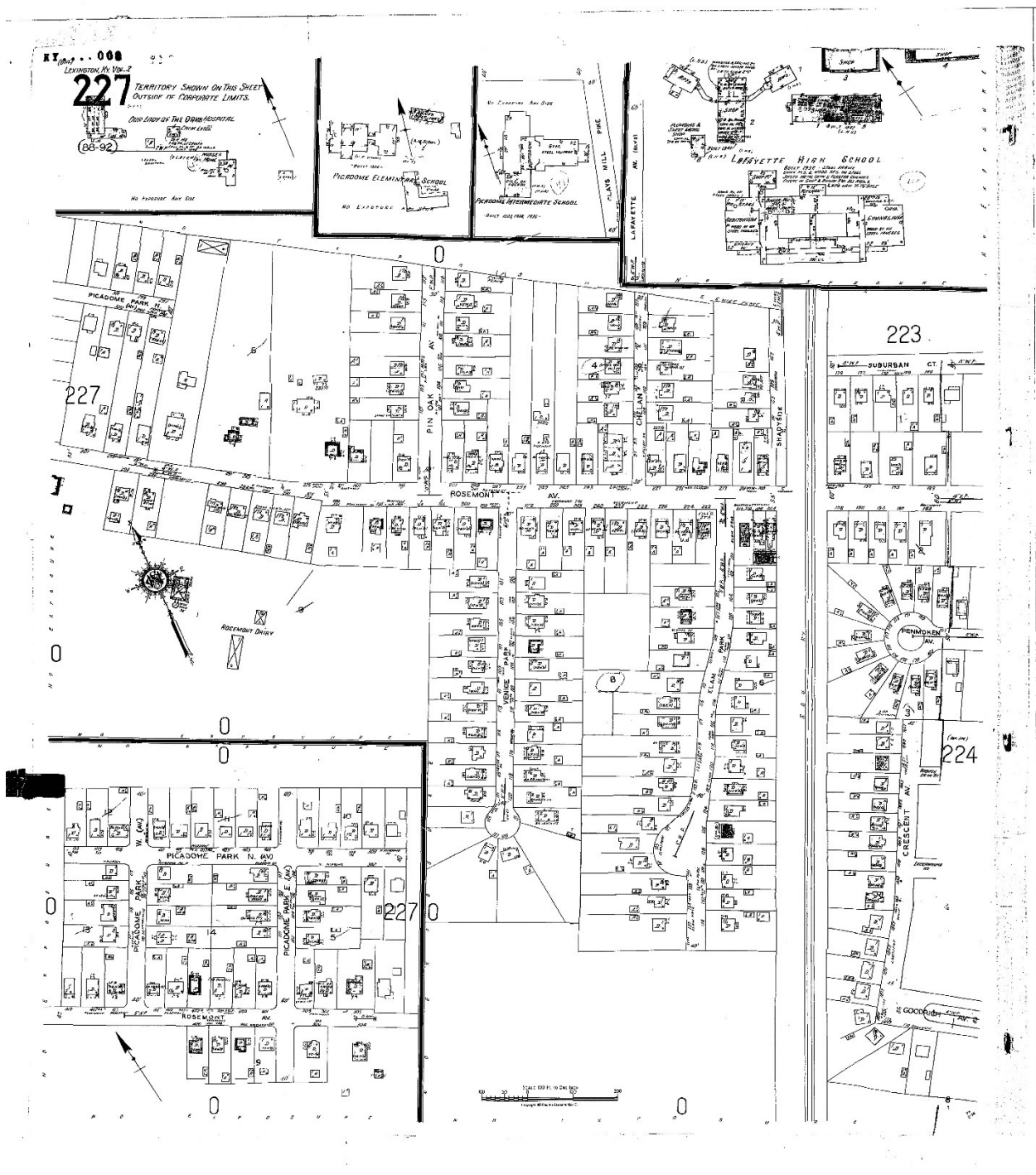


Sanborn Insurance Map

Lexington, Kentucky

1934 (updated 1950)





Sanborn Insurance Map

Lexington, Kentucky

1934 (updated 1950)

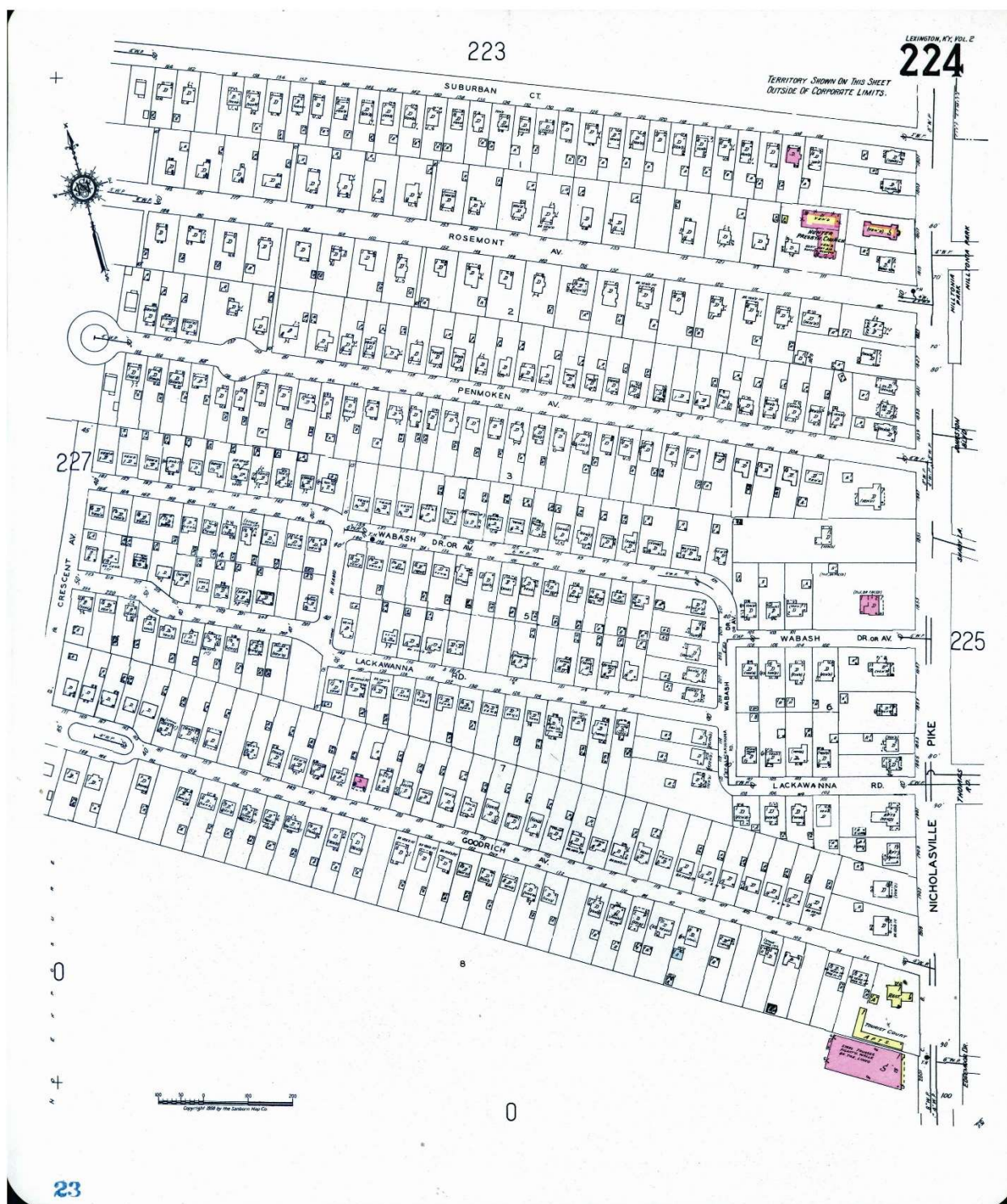
\*\*\*This page intentionally left blank\*\*\*

LEXINGTON, KY. VOL. 2  
**223**

TERRITORY SHOWN ON THIS SHEET  
 OUTSIDE OF CORPORATE LIMITS.







Sanborn Insurance Map

Lexington, Kentucky

1958

1958

\*\*\*This page intentionally left blank\*\*\*



# **SELECTED BIBLIOGRAPHY**

\*\*\*This page left intentionally blank\*\*\*

## Selected Bibliography

### Public Documents

Fayette County Deed Books. Office of the Clerks of Courts, Lexington, Kentucky.

Fayette County Plat Books. Office of the Clerk of Courts, Lexington, Kentucky.

Lexington-Fayette Urban County Government. *Imagine Lexington: 2018 Comprehensive Plan*. Division of Planning. Lexington-Fayette Urban County Government, 2018.

Lexington-Fayette Urban County Government. *Zoning Ordinance*. Division of Planning. Lexington-Fayette Urban County Government, 2001, updated 2012.

Lexington-Fayette Urban County Government. *Local Historic District and Landmark (H-1) Design Review Guidelines Lexington, Kentucky*. Division of Historic Preservation, Lexington-Fayette Urban County Government, 2008, updates 2010.

### Secondary Sources

Ames, David and Linda Flint McClelland, *Historic Residential Suburbs: Guidelines for Evaluation and Documentation for the National Register of Historic Places National Register Bulletin*, September 2002, U.S. Department of the Interior, National Park Service, National Register of Historic Places.

Clark, Clifford Edward Jr. *The American Family Home 1800-1960*. Chapel Hill: University of North Carolina Press, 1986.

Clous, Richard. "House Types." *Georgia Encyclopedia*.  
<https://www.georgiaencyclopedia.org/articles/arts-culture/house-types>

Harris, Richard and Peter J. Larkham, "Suburban Foundation, Form, and Function," in Richard Harris and Peter J. Larkham ed. *Changing Suburbs: Foundation, Form, and Function*. London: E & FN Spon, 1999.

Jackson, K.T.J. *Crabgrass Frontier: The Suburbanization of the United States*. New York: Oxford University Press, 1985.

Kennedy, Rachel. "Promise Derailed." *Business Lexington*, March 2, 2012.

Knight, Thomas A. and Nancy Lewis Greene. *Country Estates of the Blue Grass*. Original publication 1904 by Thomas A. Knight. 1973 edition published by the Henry Clay Press, Lexington, Kentucky.

McAlester, Virginia and Lee. *A Field Guide to American Houses*. New York: Alfred A. Knopf, 1998.

### **Maps**

Gunn, John W. & Charles. T. Anderson. *Map of Fayette County Kentucky, with New Roads, Interurban Railways and New City Limits Shown*. 1911.

Mullin, J. P. & J. M. Corbin. *Map of Fayette County, Kentucky*. 1904.

Sanborn Map Company. *Insurance Maps of Lexington including Greendale, Kentucky*. New York: Sanborn Map Company, 1920, 1934, 1934 (updated 1950) and 1958.

Wallis, W. R. *Map of Fayette County, Kentucky*. 1891.

### **Newspaper Material**

Lexington Herald-Leader, newspaper articles and advertisements.

### **Websites**

Kentuckiana Digital Library. <http://kdl.kyvl.org/>.

Lexington Public Library, Local Historic Index.  
<http://www.lexpublib.org/database/local-history-index>