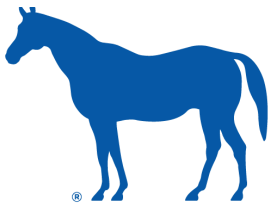


2023



LEXINGTON

*Parent and Guardian
Empowerment*



<https://www.lexingtonky.gov/youth-development-center>

859-300-5330



498 Georgetown Rd.
Lexington KY 40508



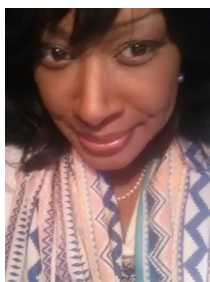
Meet Our Team



Kelly Justice, LCSW, our Clinical Program Administrator. She is a Licensed Clinical Social Worker and obtained her MSW from the University of Kentucky. Kelly has worked in the social work field for 15 years, six of those years being with LFUCG. In her spare time, Kelly is a volunteer advocate the American Foundation for Suicide Prevention. She also provides trainings to educate families and community partners regarding substance use and harm reduction, suicide awareness, and recognizing/reducing burnout.



Taylor Lewis, CSW, is a Certified Social Worker and University of Kentucky graduate with a Masters in Social Work. She has experience working with adolescents and adults in both clinical and school settings. Taylor provides court case management and substance use individual and group therapy services within the PAGE program to the youth involved with LFUCG, Division of Youth Services.



Tera Sullivan, LSW, is a Licensed Social Worker who received her Bachelors of Social Work degree from the University of Kentucky. Ms. Sullivan has worked for LFUCG, Division of Youth Services for 20 years. She currently serves families in this community through court, school, agency, CDW diversion, and parent referrals. She also facilitates support groups for parents & grandparents, and parenting education classes.



Josie Elder is the PAGE staff assistant. She is originally from Detroit, MI. She is currently enrolled at Bluegrass Community and Technical College and is in her final year of the Administrative Office Technology Program. Josie has been working with organizations who serve youth and their families for the last four years. Prior to that she was a preschool teacher for nine years.



About the Parent and Guardian Empowerment Program

Parent and Guardian Empowerment (PAGE) assists Fayette County youth and adolescents in reaching their highest potential. We offer free, positive opportunities and programs. PAGE strives to help parents/guardians gain the support, skills, and confidence they need to guide and motivate their youth while reducing conflict. In turn, the parents/guardians feel empowered.

Experienced social workers work with each family to assess challenges and problems, then develop a service plan with the goal of preventing future behavior issues. Successful completion of the program can assist in reducing the chances of conflict with family, peers, and status charges in the Juvenile Justice system.

Our Mission

To provide Fayette County youth under the age of 18 who are navigating their adolescent years and their families with specialized case management services.

Our Vision

The services we offer are designed to strengthen family life, prevent family breakdown and facilitate the development and social functioning of young people.



What we do

1. Community Case Management

Social workers connect families to resources through case management services for youth. Youth are referred by parents/guardians, community agencies and schools. Parents and youth are offered free parenting courses and support groups. This service is voluntary.

2. Court Case Management

Social workers provide intensive case management services for youth referred by Family Court for the status offenses of: habitual truancy, habitual runaway and/or beyond control of parent or school. This service is court ordered and participation is mandatory.

3. Substance Use Outpatient and Case Management Services

Individual and group therapy services focused on substance use harm reduction. This service is provided by a licensed clinical social worker and a certified social worker under clinical supervision. Substance Use assessments are completed from the DSM-5-TR Level 1 and 2 Cross-Cutting Symptom Measures; to support clinical diagnoses, treatment planning, performance monitoring, program planning and placement recommendation for our youth and to empower their families.

4. Youth Empowerment Workshops

PAGE offers four youth workshops that provide adolescents with the skills needed to build character traits and empower them to make positive and healthy decisions. These workshops can be provided one on one or in a group setting. Most sessions are completed in locations that do not require transportation for the youth such as a school setting.

5. After Care Services

PAGE offers any previous Division of Youth Services client; continued after care and support services after they have completed their previous programming. The individual is **not** required to be successful in previous Youth Services' programs. The only requirements are (1.) The youth must be age 12-21. (2.) Seeking assistance with continued education or employment needs. This service is available free, up to six months.



Community Case Management Services Include:

- Completion of a social needs assessment to evaluate fundamental issues or needs
- Creation of a client centered service plan
- Referrals to needed services for youth and families based on the social needs assessment
- Encouraging family unit success within the home and community
- Collaboration with community partners to refer families for additional services as needed
- Nurturing parenting classes for the adolescent population
- Parent and Grandparent support groups
- Parent education classes
- Peer Support Programming within the community

Community Case Management Services are provided by:

Tera Sullivan, LSW
Community Case Management
Social Worker
859-300-5336
tsullivan@lexingtonky.gov



Court Case Management Services Include:

- Monitoring compliance of family court orders both pre and post adjudication
- Completing assessments and create a client centered service plan
- Drug testing, when needed or court ordered
- School visits, referrals and case collaboration with other service providers
- Imposing graduated sanctions as needed
- Completing disposition reports and reviews for Family Court
- Monitoring home detention orders when ordered by Family Court and or the youth is on an ankle monitor
- Attending all Family Court detention hearings
- Attending regularly scheduled pre-trial, disposition and review hearings for Family Court

Court Case Management Services are provided by:

Taylor Lewis, CSW
Court Case Management
Certified Social Worker
859-300-5338
tlewis@lexingtonky.gov



Substance Use Outpatient and Case Management Services Include:

- Complete substance use assessments and treatment plans
- Individual and Group substance use sessions.
- Provide trauma-focused classes for the parent/guardian and youth/sibling regarding the effects of exposure to substance use disorder within the family unit.
- Connect families to resources within the community to continue meeting their needs associated with substance use and or trauma exposure if higher level of care is required.
- Drug testing
- School visits, referrals, and case collaboration with other service providers
- Provide training and resources regarding harm reduction to community partners to increase the success of substance use treatment for adolescents.

Substance Use Services are provided by: Clinical Program Administrator and CSW

Kelly Justice, LCSW
Taylor Lewis, CSW
Substance Use Services
Licensed Clinical Social Worker
Certified Social Worker
859-300-5330



Youth Empowerment Workshops

Parent and Guardian Empowerment offers youth four workshops. These workshops provide adolescents with the skills needed to build their character traits and empower them to make positive and healthy decisions.

Individual Change Plan: Participants will recognize strategies for moving through change, by creating an individualized plan for addressing, creating and measuring goal progress with the treatment team during the treatment process.

Responsible Behavior: This workshop centers on the connection between feelings, thoughts and behaviors. Participants analyze the association between situations, self-talk, feelings and behavior choices. Behavior Check strategies are introduced to participants for use during treatment.

Handling Difficult Feelings: Participants are aided in identifying difficult feelings and their connections to irresponsible behaviors. They will examine seven proven strategies for coping with difficult feelings and develop a method to deal with those feelings as they emerge.

Relationships and Communication: The focus of this workshop is understanding and improving relationships. Participants will enhance communication skills, allowing them to express themselves in healthy ways, and handle negative peer pressure.

Youth Empowerment Workshops are managed by:

Kelly Justice, LCSW
Clinical Program Administrator
859-300-5331
kjustice@lexingtonky.gov



Community Partners

The Parent and Guardian Empowerment Program works with many community organizations to ensure that our families are receiving quality services to reach their service plan goals. Examples of these community partners are listed below.

- Family Court
- CDW Office
- New Vista
- Key Assets
- MCCC
- Intrust
- Lion Heart
- TICC
- Andrews Counseling
- Blue Waters
- Creative Solutions of the Bluegrass
- KY River Foothills
- Mending Point
- The Learning Center
- YAP (Youth Advocacy Programs)
- God's Pantry
- United Way
- The Ridge
- The Brooke
- Rivendale
- Detention Alternatives Program

Community Involvement

The Parent and Guardian Empowerment Program believes it is imperative to serve the residents of the city of Lexington by remaining involved in the community. Examples of committees and teams that PAGE staff attend are listed below.

- Family Accountability Intervention and Response
- Drug Free Lexington
- Community Collaboration for Children
- Black and Williams Advisory Board
- LFUCG Mentoring Project



LEXINGTON

*Parent and Guardian
Empowerment*

Kelly Justice, LCSW

Clinical Program Administrator

859-300-5331

kjustice@lexingtonky.gov

Taylor Lewis, CSW

Certified Social Worker

859-300-5338

tlewis@lexingtonky.gov

Josie Elder

Staff Assistant

859-300-5330

jelder2@lexingtonky.gov

Tera Sullivan, LSW

Social Worker

859-300-5336

tsulliva@lexingtonky.gov

859-300-5330



<https://www.lexingtonky.gov/youth-development-center>

498 Georgetown Rd.
Lexington KY 40508

