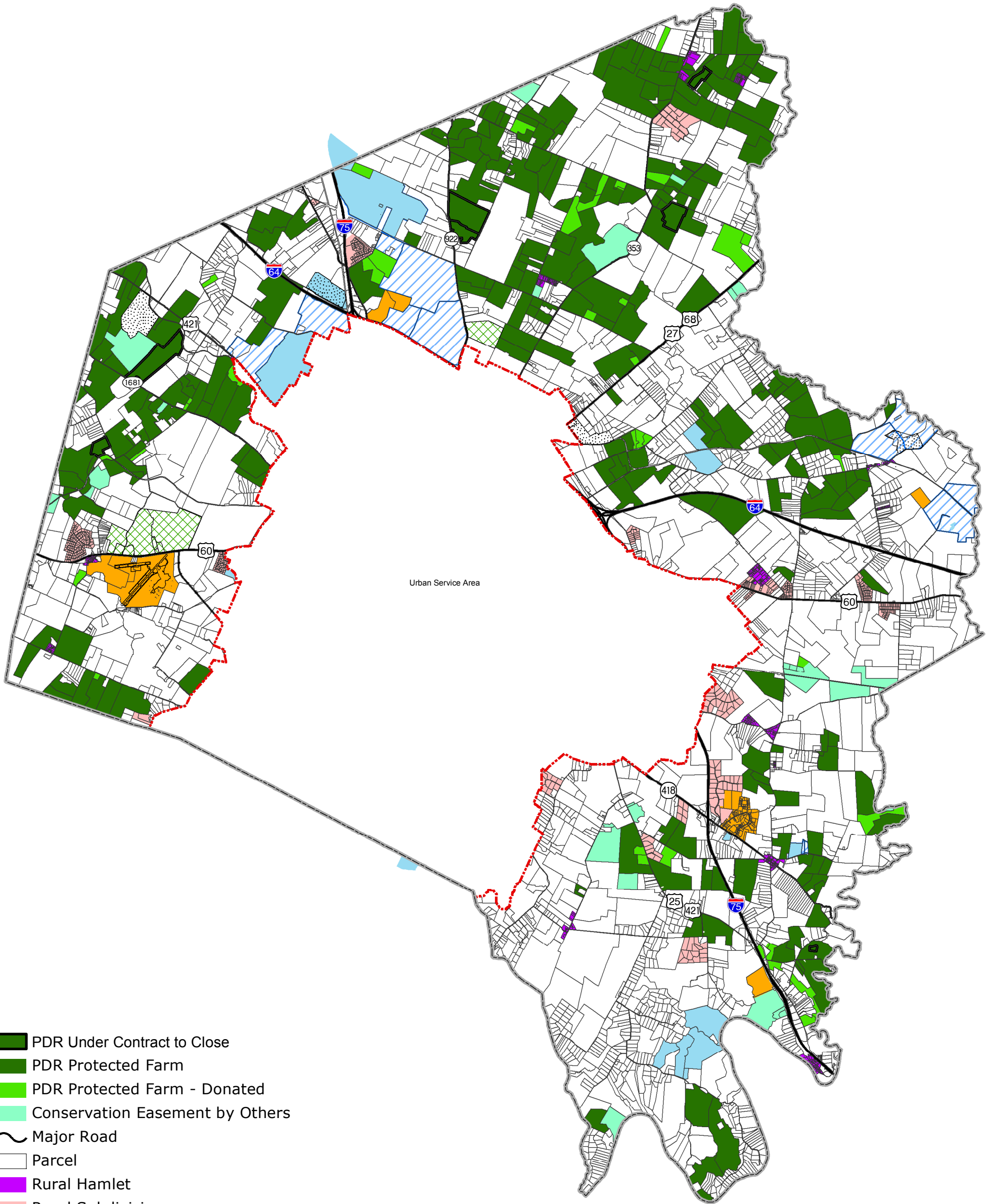


PDR Protected Farms, Accepted Offers, Other Protected Farms, and Other Public Lands



28,801 acres of preserved farmland now protected by PDR
50,000 acres of farmland is the goal of PDR.

Lexington-Fayette County, Kentucky



- PDR Under Contract to Close
- PDR Protected Farm
- PDR Protected Farm - Donated
- Conservation Easement by Others
- Major Road
- Parcel
- Rural Hamlet
- Rural Subdivision
- Industrial / Airport
- Park
- Public Land
- Keeneland/ Fasig-Tipton Property
- Golf Course
- Urban Service Area Boundary
- County Boundary

This product is produced and distributed by:
Lexington-Fayette Urban County Government
GIS Section 200 E. Main St. 7th Floor
Lexington, KY 40507. Not for resale.

All information on this product is believed
accurate but is not guaranteed without error.
No part of this publication may be reproduced,
stored, or transmitted in any form or by any
means without written permission from LFUCG.

© 2015 LFUCG



Revision Date: 01-26-2015

T:\MXD_Proj\MO_CAO\pdrmap.mxd\BoardMap\Board Map - 11 x 17.mxd