

21c Lexington, LLC
710 W Main Street, Suite 200
Louisville, KY 40202

DEBORAH BERKE & PARTNERS ARCHITECTS LLP
220 Fifth Avenue
New York NY 10001
phone 212 229 9211
fax 212 989 3347
www.dberke.com



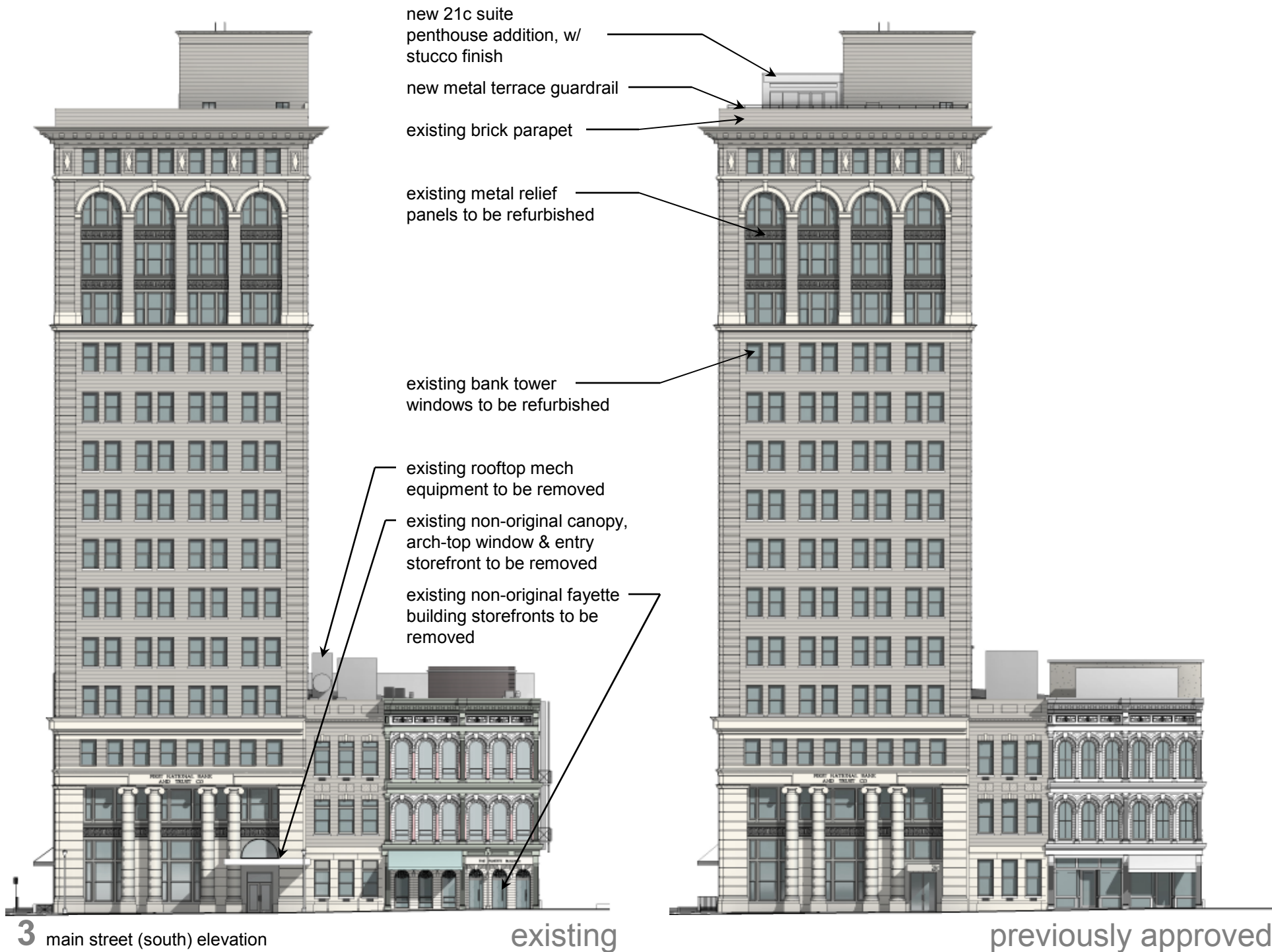
LEXINGTON

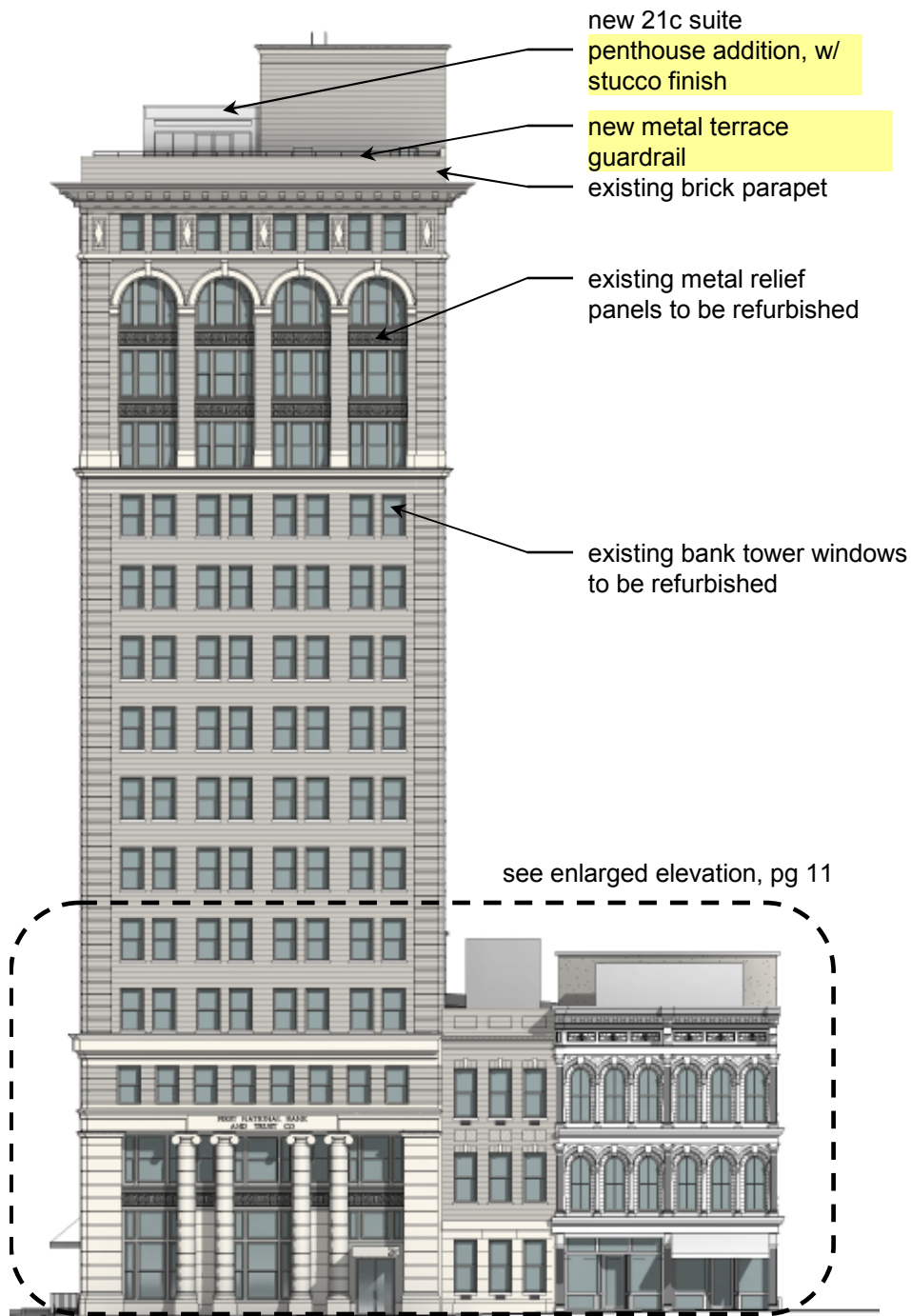
REVISIONS TO WORK AUTHORIZATION PERMIT

NOVEMBER 6, 2013



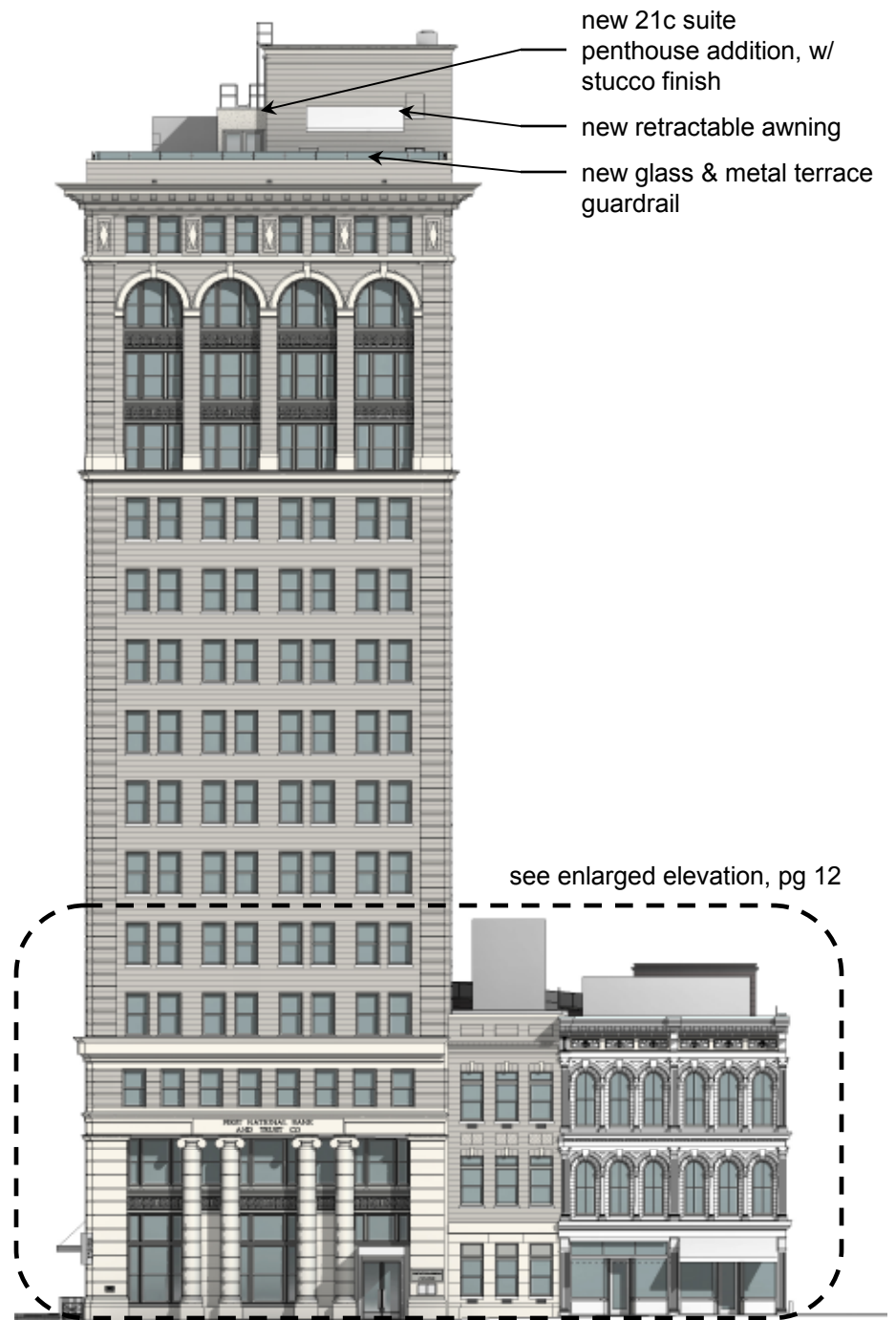
building elevations





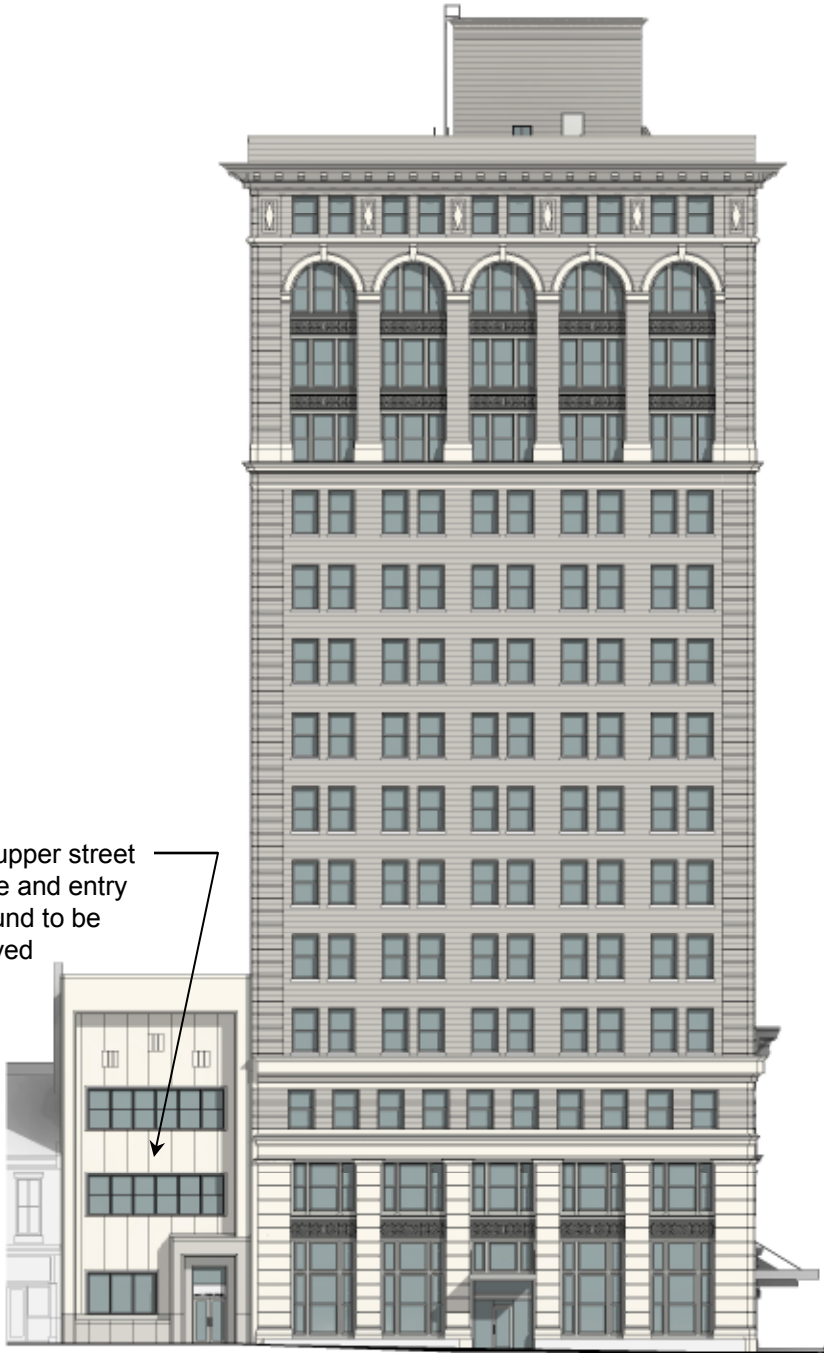
4 main street (south) elevation

previously approved



revised

inset upper street
façade and entry
surround to be
removed



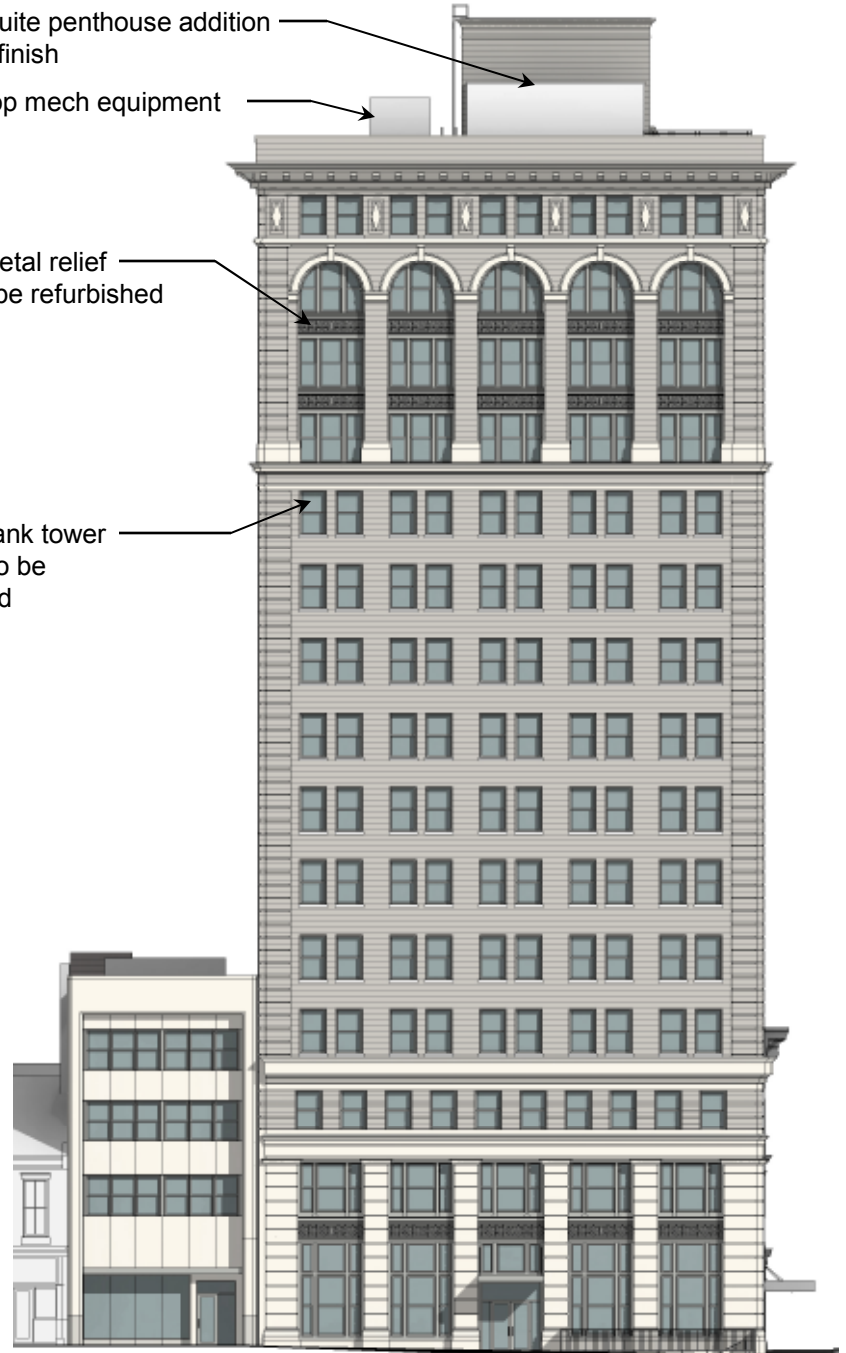
5 upper street (west) elevation

existing

new 21c suite penthouse addition
w/ stucco finish
new rooftop mech equipment

existing metal relief
panels to be refurbished

existing bank tower
windows to be
refurbished



previously approved

new 21c suite penthouse addition
w/ stucco finish

new rooftop mech equipment

existing metal relief
panels to be refurbished

existing bank tower
windows to be
refurbished

see enlarged elevation, pg 13



6 upper street (west) elevation

previously approved

new 21c suite penthouse addition
w/ stucco finish

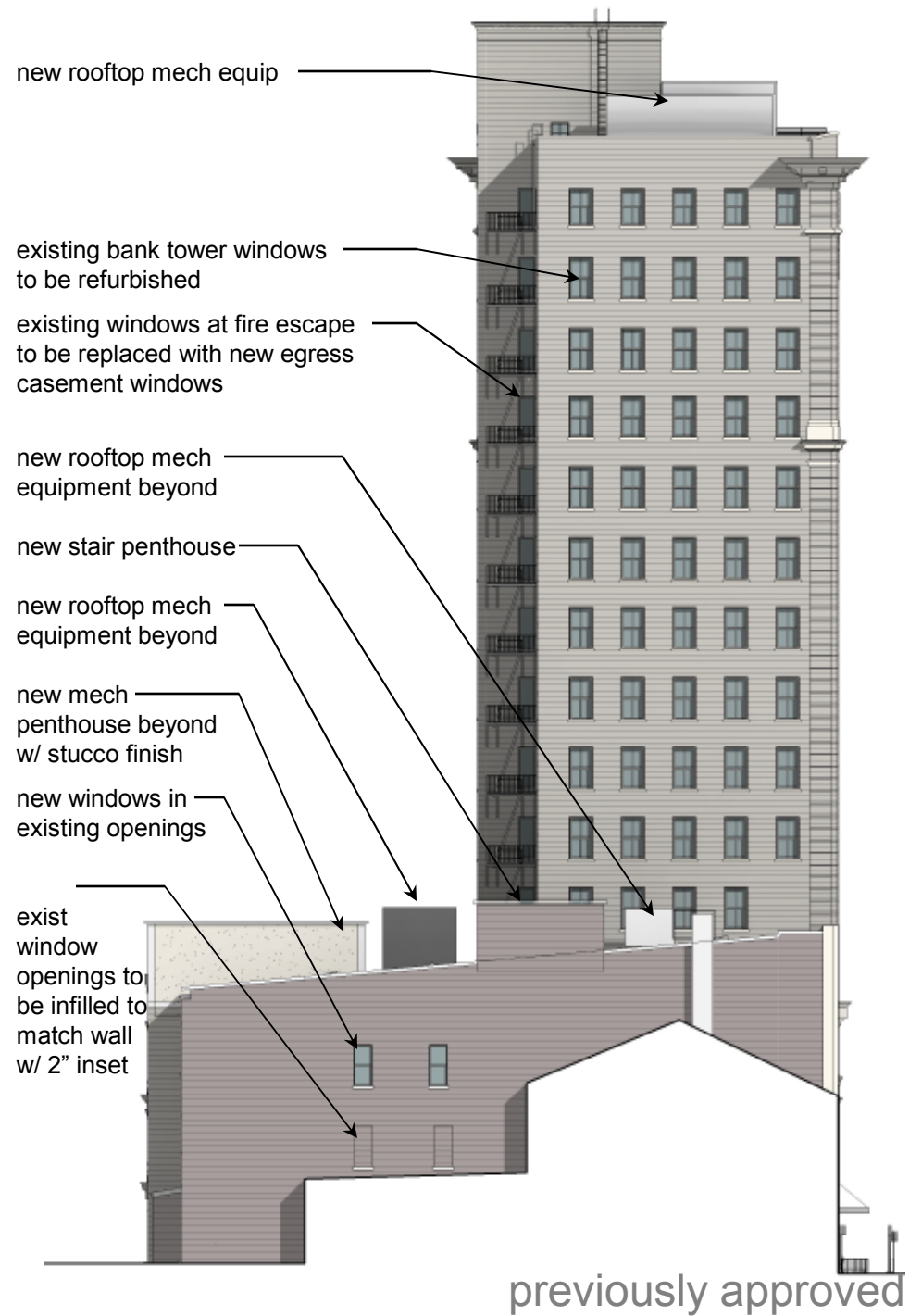
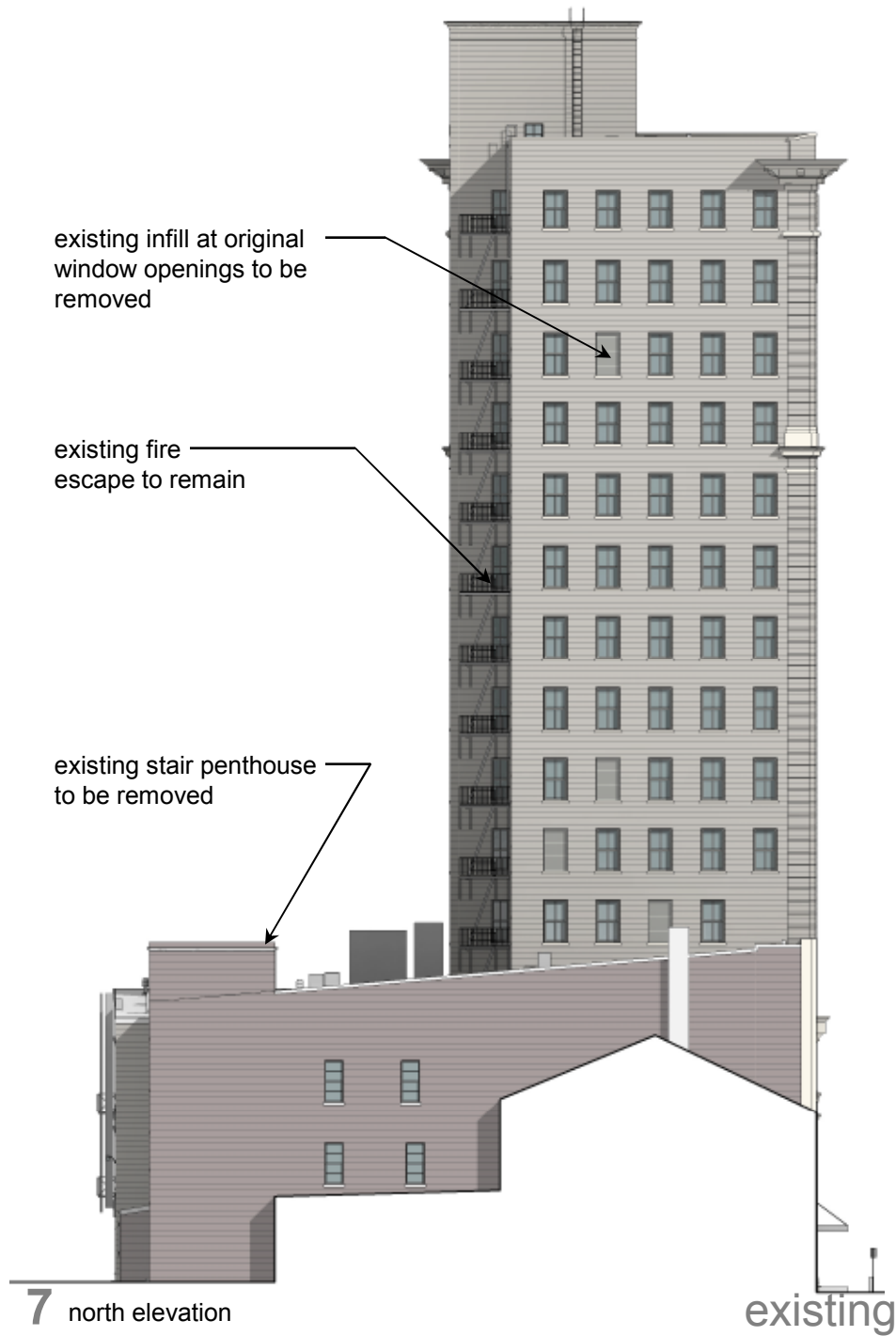
equipment screen wall

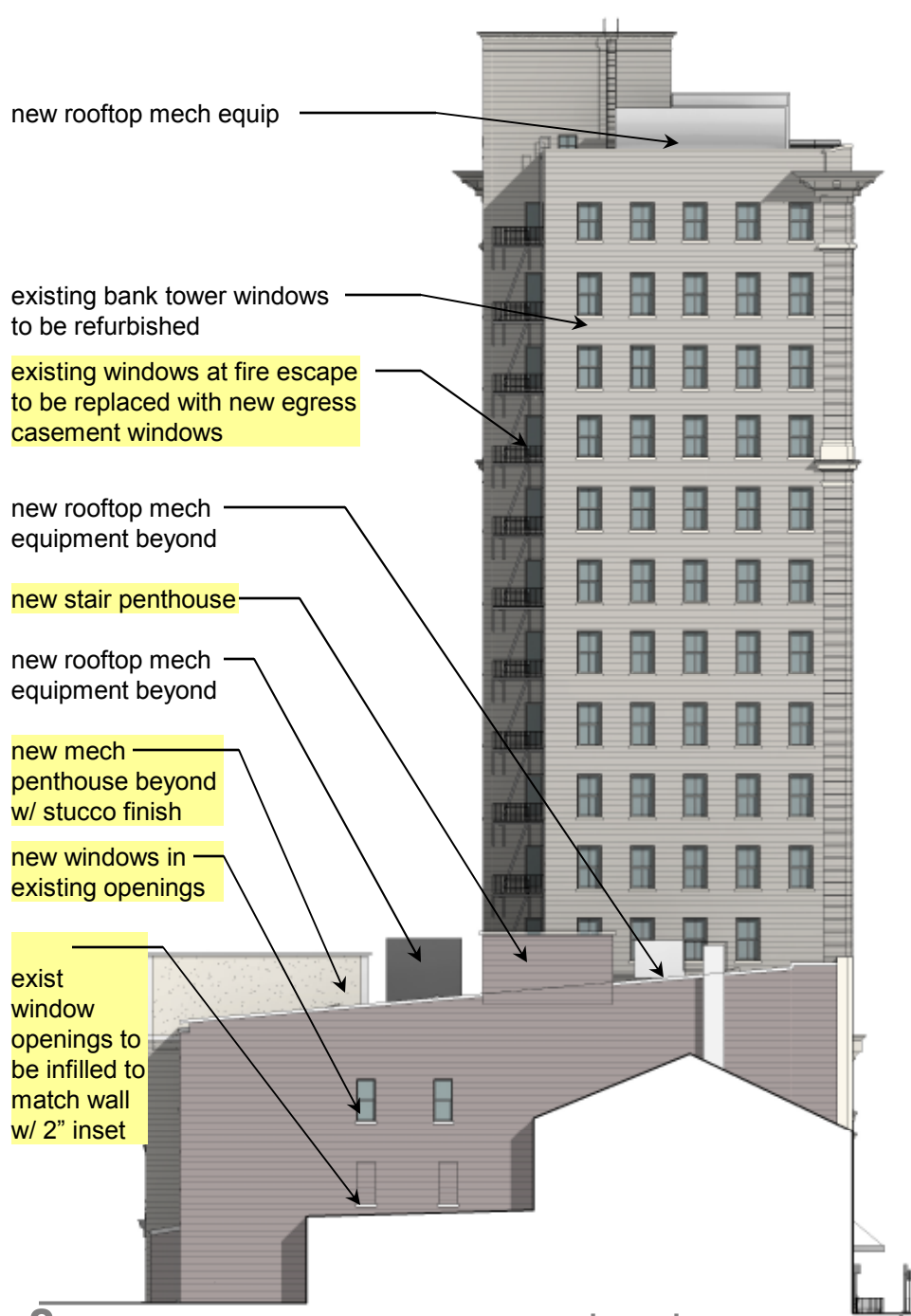
new glass & metal terrace
guardrail

see enlarged elevation, pg 14



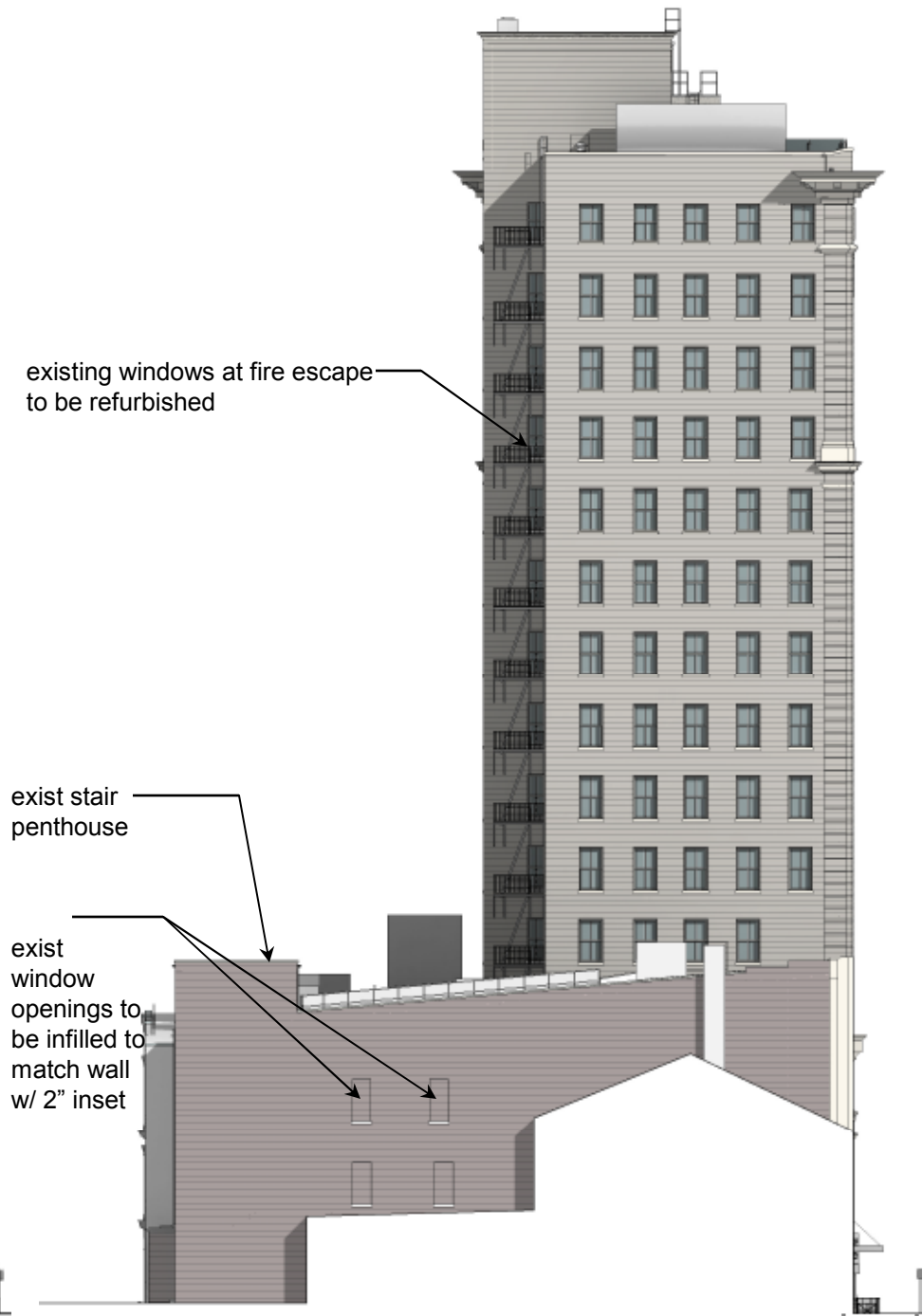
revised



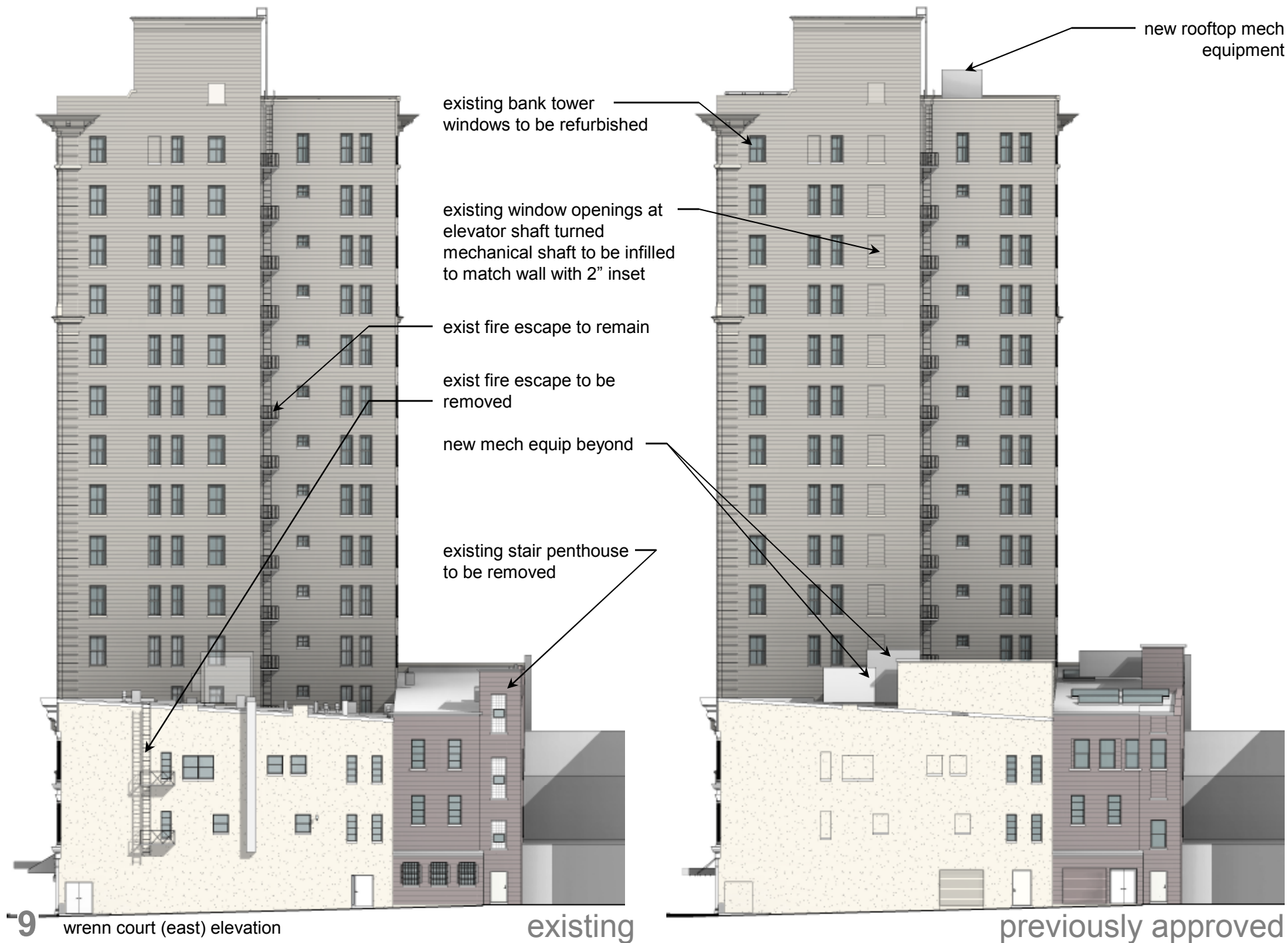


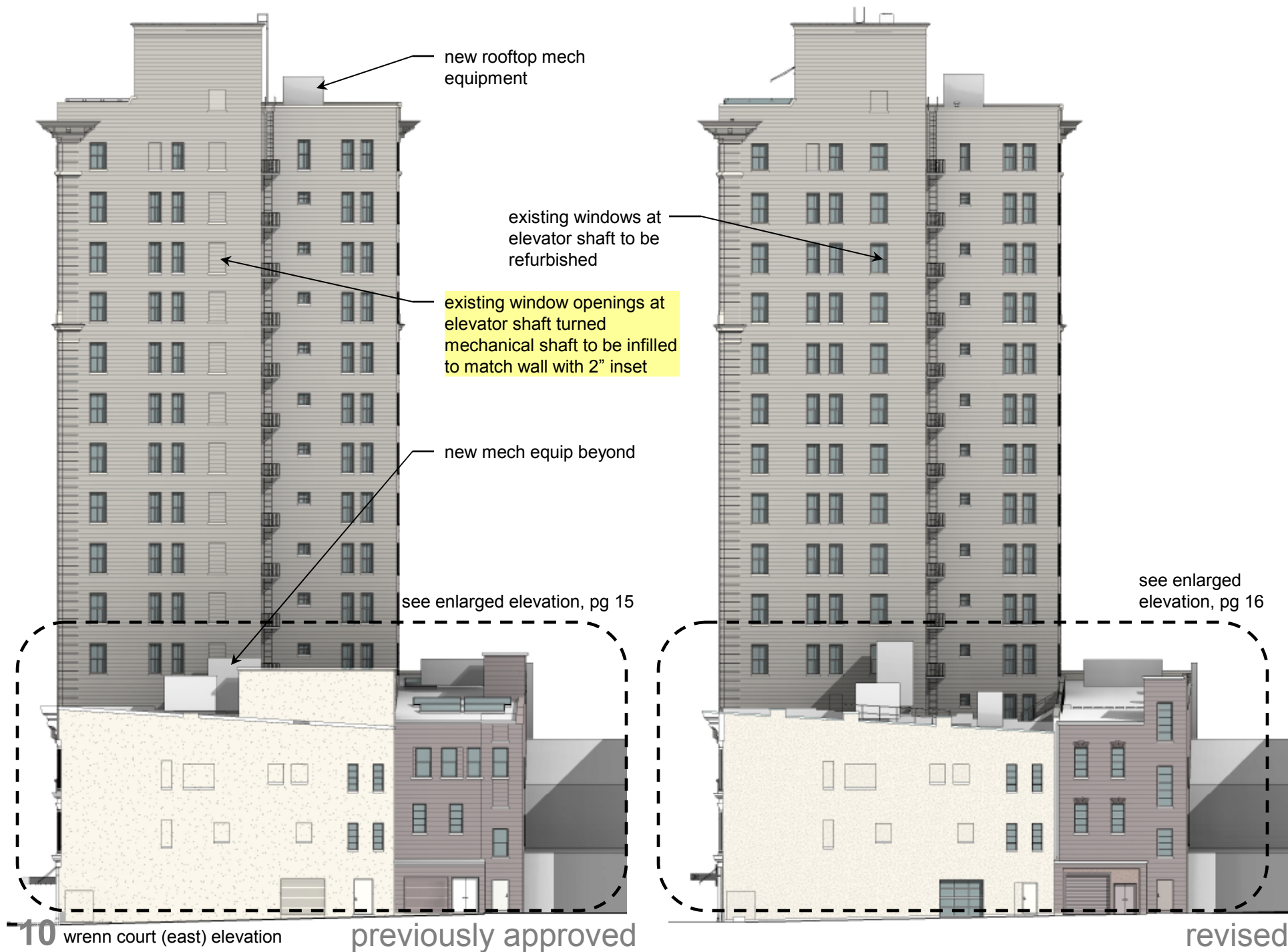
8 north elevation

previously approved



revised

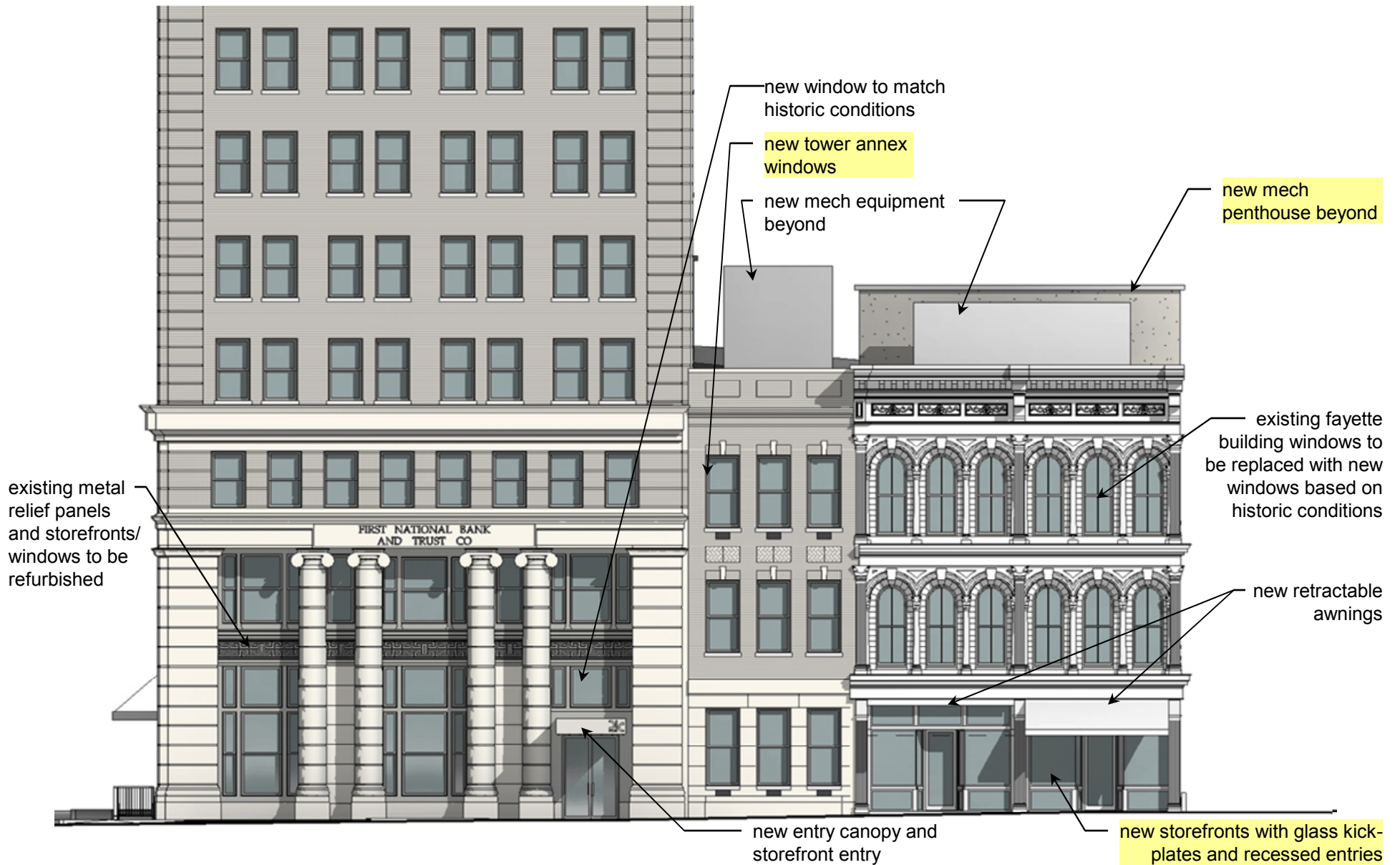




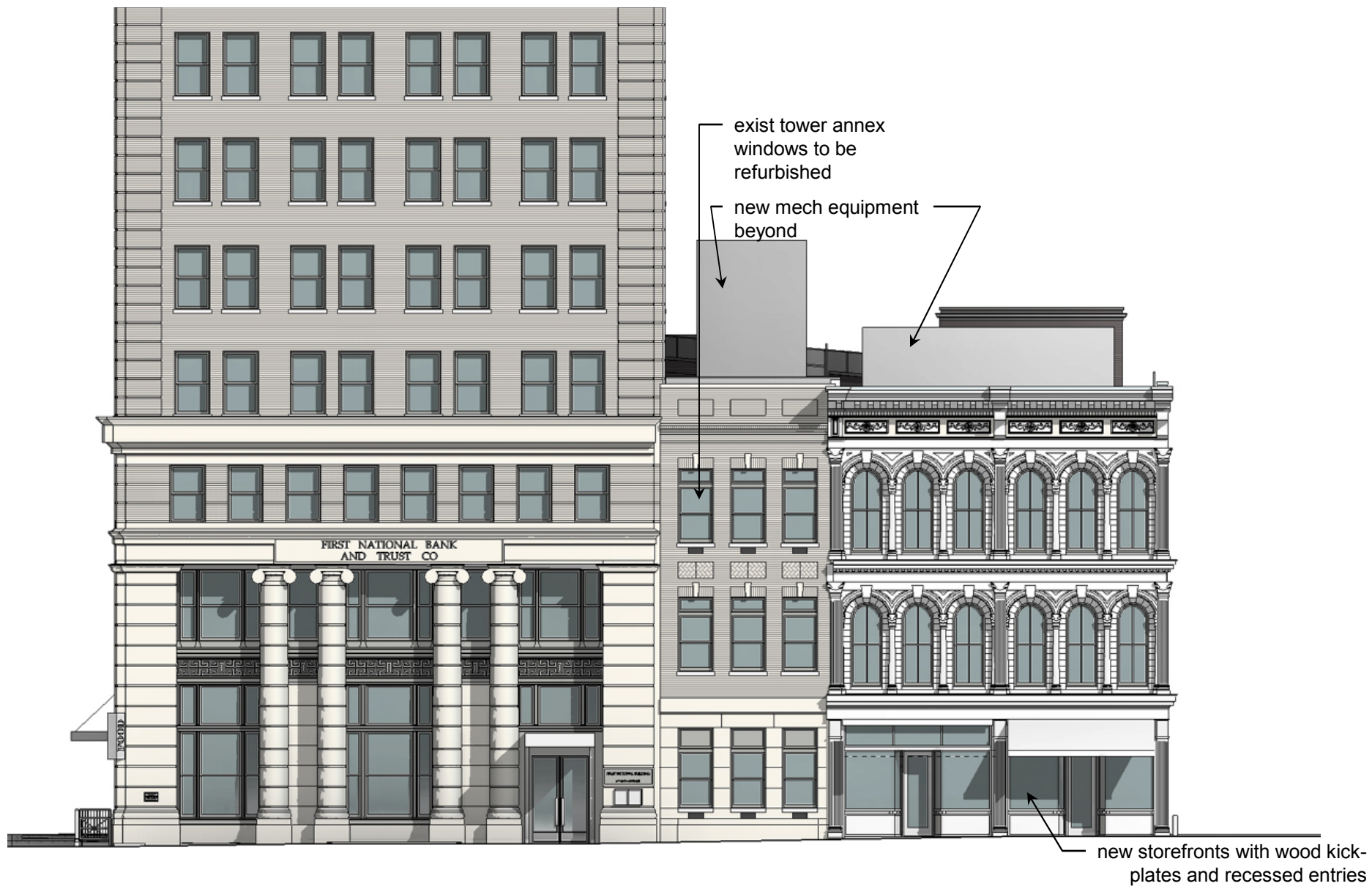
10 wrenn court (east) elevation

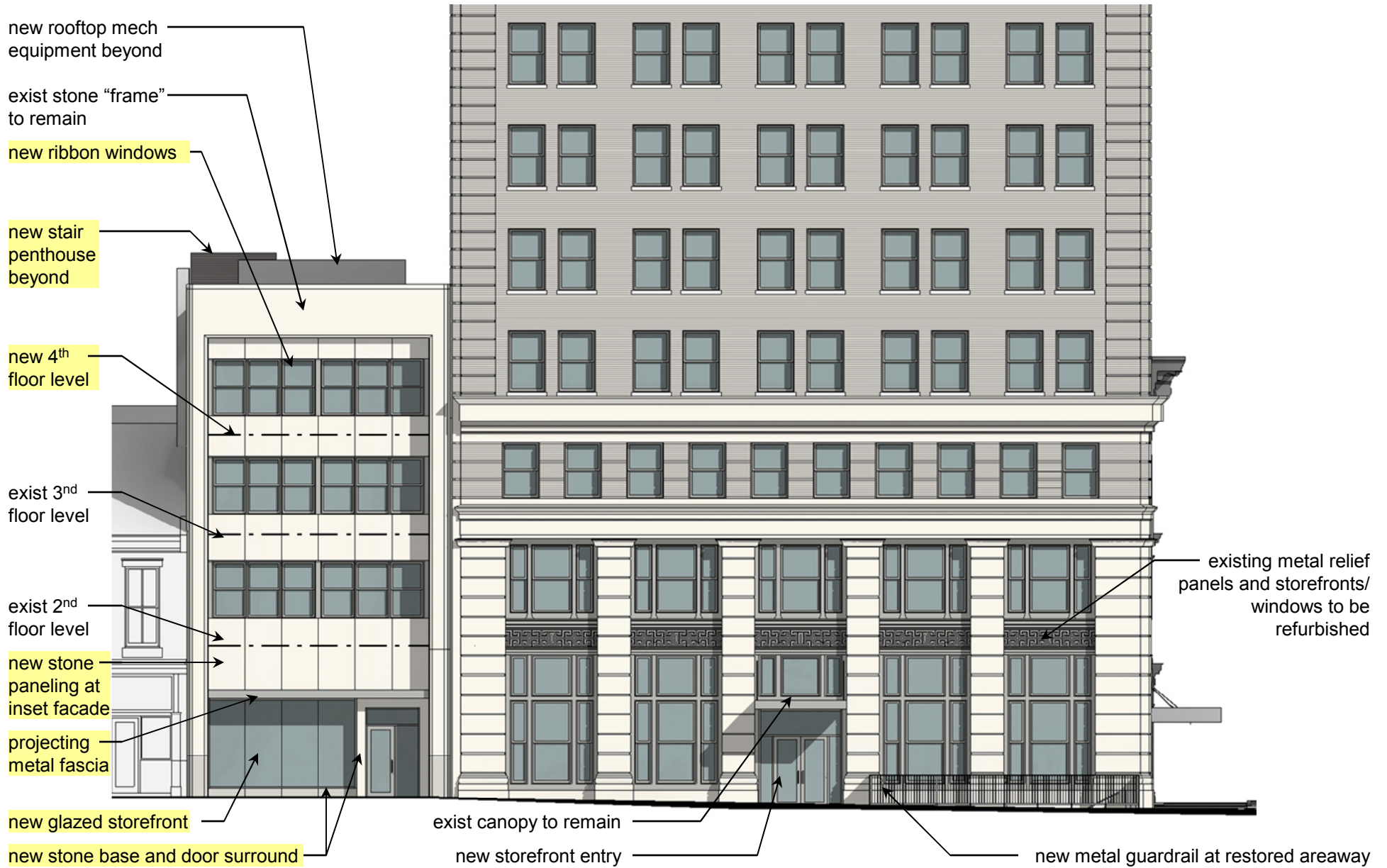
previously approved

revised



previously approved main street (south) elevation



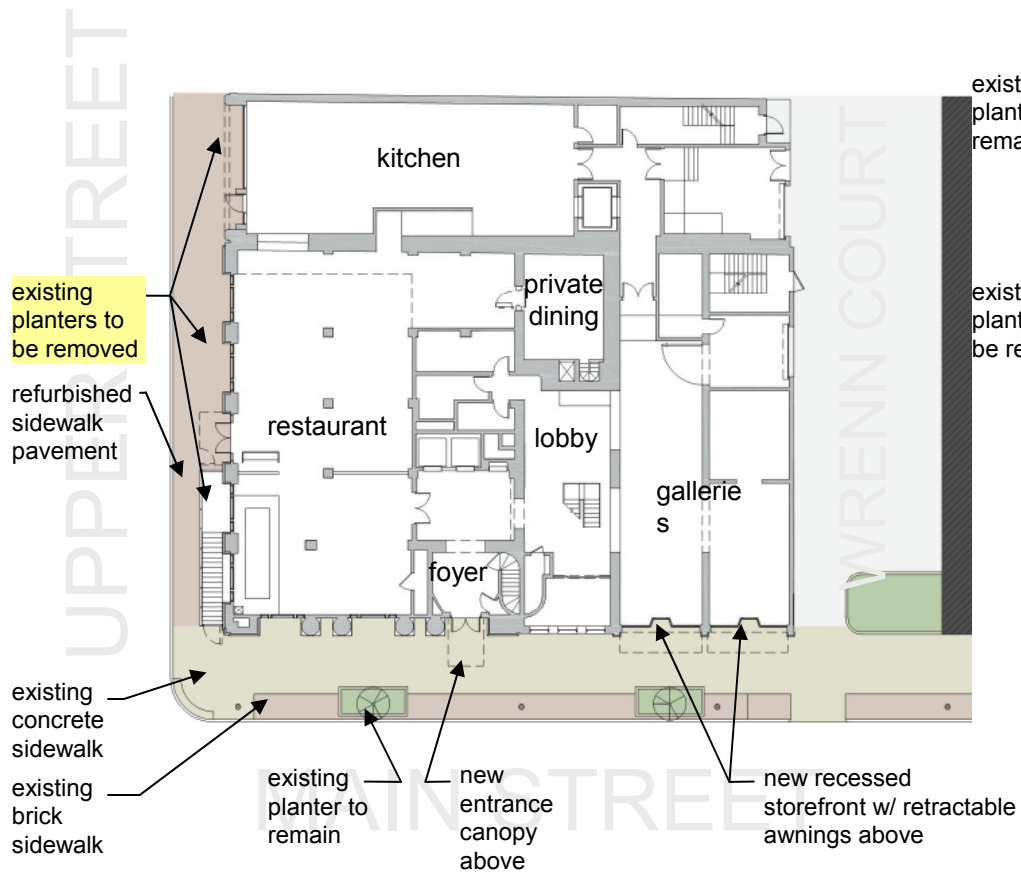




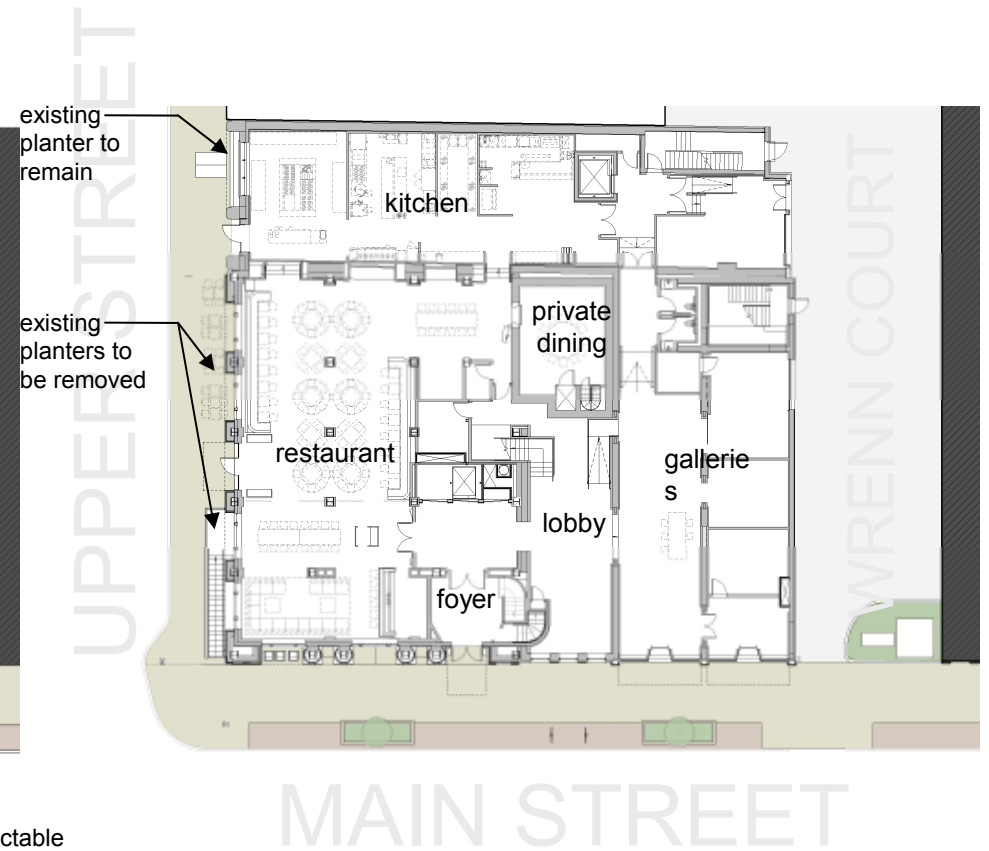




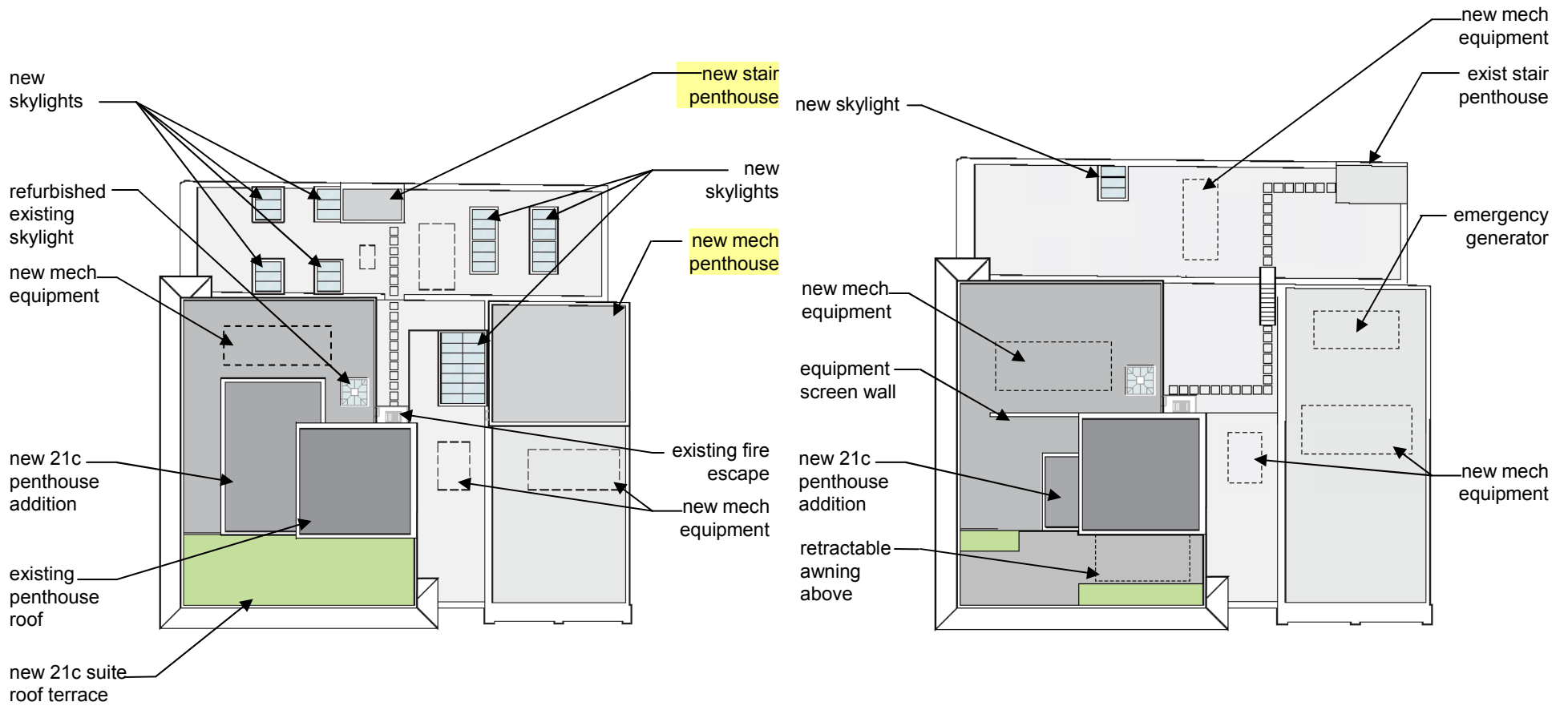
plans



18 previously approved site & first floor plan



revised site & first floor plan



19

previously approved roof plan

revised roof plan

