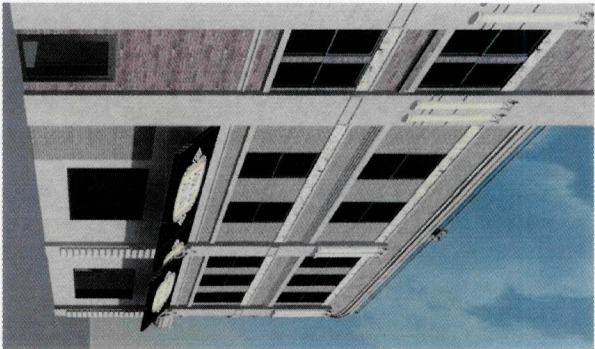
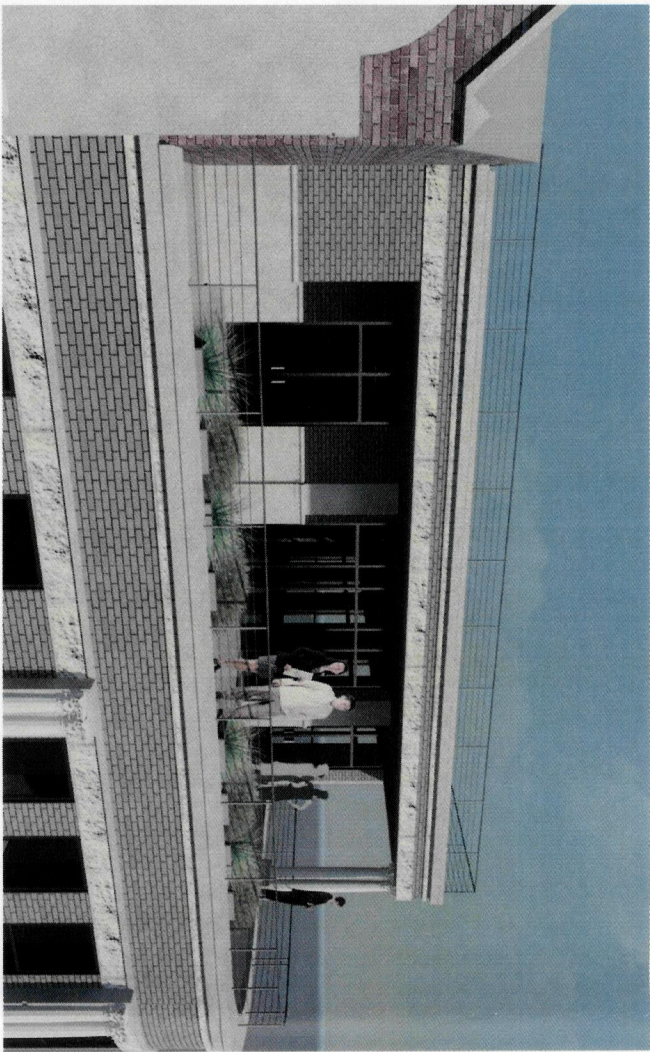


1204	4/25/2012	BA3
------	-----------	-----

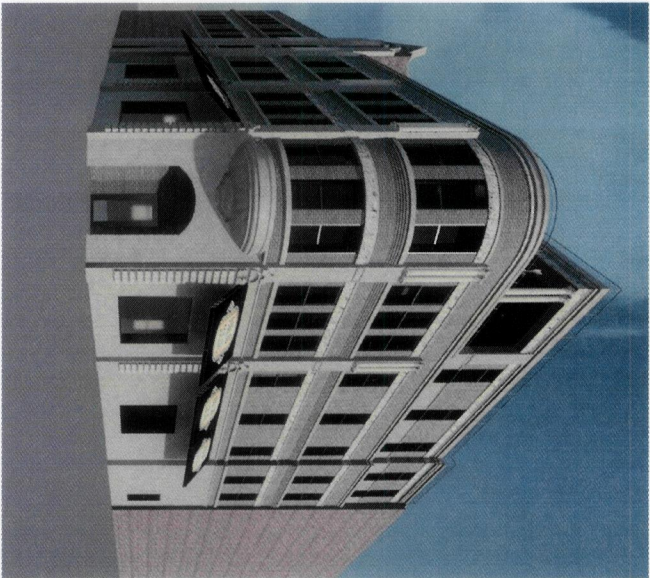
118 Constitution Street Lexington, KY 859.252.0044



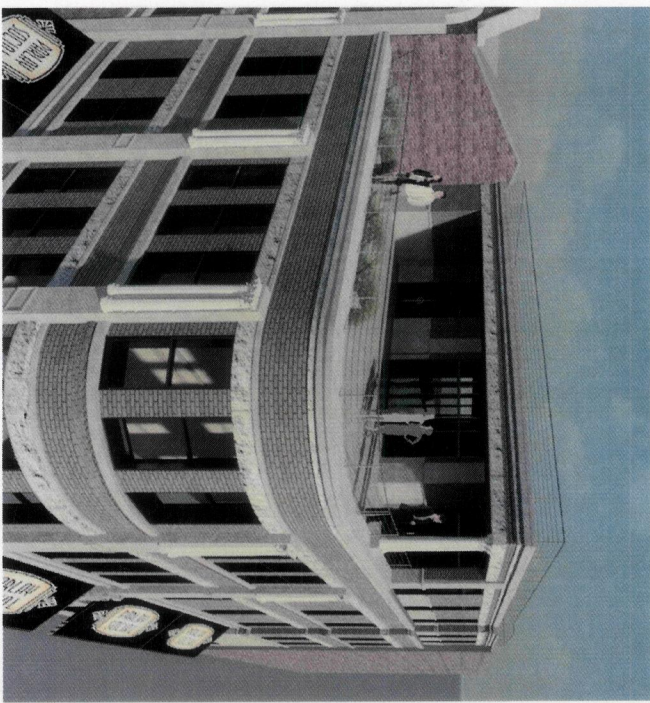
6 View From Short Street
1/2" = 1'-0"



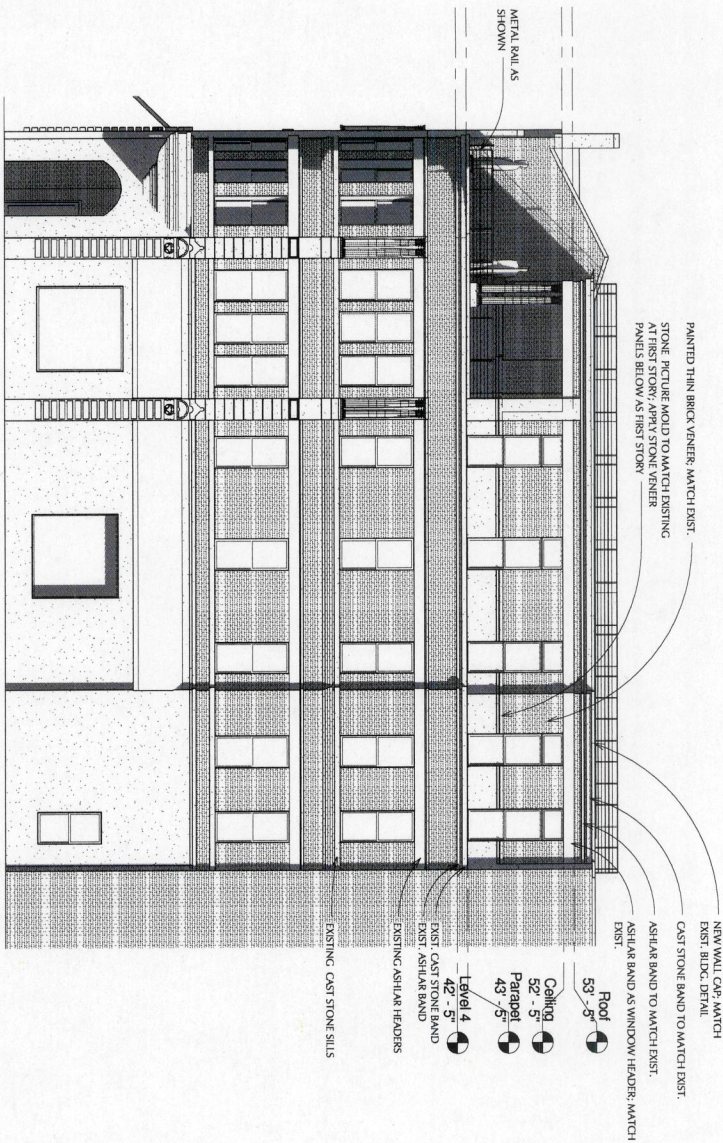
3 Front Door View
1/2" = 1'-0"



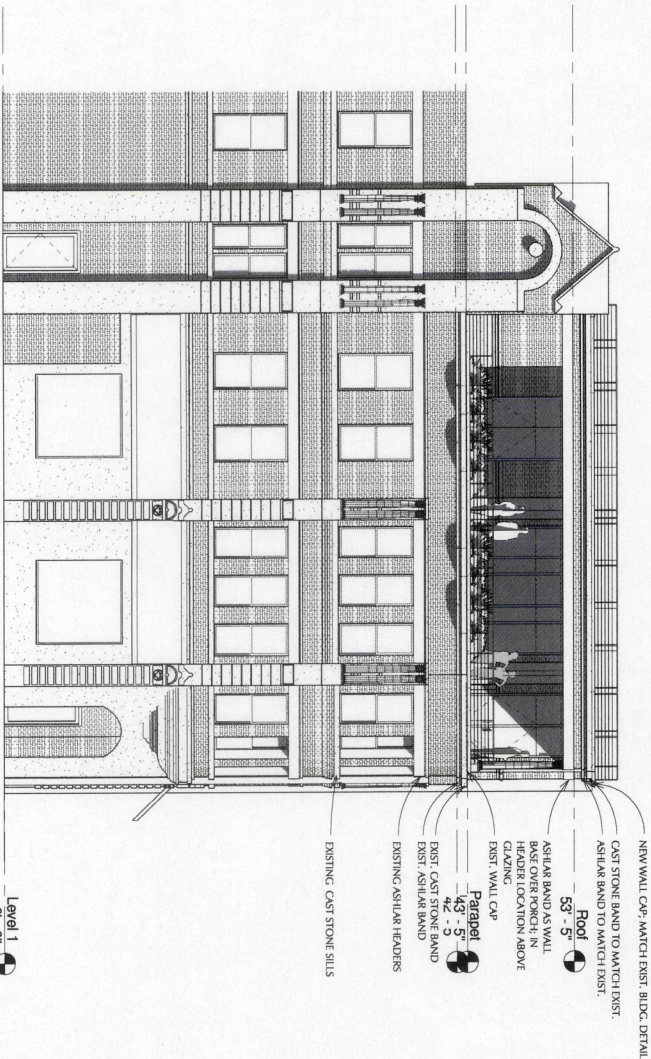
4 Lower Corner
1/2" = 1'-0"



5 Upper Corner
1/2" = 1'-0"



1 Market Street Elevation
1/8" = 1'-0"



2 Short Street Elevation
1/8" = 1'-0"

ALBERT + BURNWORTH
ARCHITECTURE
118 Constitution Street Lexington, KY 859.252.0044

Conceptual Elevations
Bob's Bar - 4th Floor
Enter address here

A102



Innovative Equine Systems
Extraordinary Barn Interiors...Unrivaled Service

Evopave Interlocking Rubber Pavers

Evopave interlocking pavers have a dog-bone shape and are available in a variety of thicknesses and colors. They add an old-world elegance with their cobblestone look, enhancing the beauty and safety of your barn.

Made of natural recycled rubber and a non-toxic polyurethane binder, this rubber flooring is manufactured in such a way as to be virtually indestructible and yet be environmentally friendly at the same time.

Use Evopave for your barn aisles, stall floors, tack-up areas, walking paths and even driveways. Promote the well being of your horses by providing them with a comfortable, non-slip surface on which they feel confident, calm, secure and relaxed.

Those slippery, heavy, high-maintenance, cut-up-at-the-edges black rubber mats are a thing of the past.



- Eliminate painful and costly injuries caused by slippery surfaces
- Improve the confidence of your horse
- Enhance the aesthetic appeal of your barn
- Reduce the dust levels that cause allergies and irritations
- Improve your barn's acoustics



Evopave interlocking rubber pavers specifications



Evopave interlocking rubber pavers photo gallery